



———— 2026 ————

OPULENCE SERIES

Coast Spas Manufacturing
6315 202 Street, Langley, BC, Canada
604 514 8111
info@coastspas.com
www.coastspas.com



WORLD'S BEST BUILT SPAS

Here at Coast Spas we have over 25 years of experience crafting the World's Best Built Spas®. Our mission is to deliver the highest quality spas with exceptional performance to help improve your overall wellness. We are so glad you've chosen a Coast Spa and we hope you, your family and friends all enjoy it for years to come.

Thank you for choosing us!



CONGRATULATIONS!

YOU'RE ALMOST READY TO ENJOY YOUR NEW SPA!

Before you begin to enjoy your spa, please take a moment to submit your spa warranty. For registering your spa, you will need the spa serial number. Picture below will help you locate the serial number on your spa.



You can register your spa by using below link.
<https://coastspas.microsoftportals.com/>

FOR YOUR REFERENCE

Spa owner name: _____

Address: _____

Contact: _____ Email: _____

Spa Serial number: _____ Purchase Date: _____

Delivery Date: _____ Dealer Name: _____

Contact your spa selling dealer if you have any queries related to your Opulence Spa. Coast spas authorized dealers are trained professionals who can assist you with spa parts, setup, operations, maintenance, and technical support.

DISCLAIMER: At the time of print, this manual is accurate in its information. Coast Spas reserves all the rights to change/modify any spa designs and/or features without notification. To check on updates or for other information, please visit www.coastspas.com

TABLE OF CONTENTS

Coast Spa Thank you! letter	Page	2
Registering your spa	Page	3
Table of contents	Page	4
Basic information	Page	5
Important safety instructions and glossary of terms	Page	6-8
Opulence spa general layout	Page	9
Opulence spa collection	Page	10-12
Opulence spa features	Page	13
Start up guide— Opulence series	Page	14
Opulence spa care guide	Page	15-17
Basic installation and configuration guidelines : Electrical requirements	Page	17-18
Opulence spa maintenance procedures	Page	18-20
Coast Spas chemicals	Page	21-22
Water clarity troubleshooting	Page	23
Troubleshooting guide	Page	24-25
Draining & Winterizing	Page	26
Opulence spa controls	Page	27
Opulence spa specifications	Page	28
Opulence spa jet operations	Page	29-38
Balboa Wi-Fi module	Page	39
ControlMySpa™	Page	40-43
Balboa Bluetooth Audio (bba™3)	Page	44-46
Coast Status	Page	47-48
Coast Spas Care Saltwater system	Page	49-53
Opulence spa service log	Page	54-55



PLEASE READ YOUR ENTIRE OWNER'S MANUAL BEFOR SPA OPERATION



Basic Information

Water Care

IMPORTANT: Caring for your water by ensuring proper chemical usage is the single most important thing you can do to keep your Opulence Spa in good condition.

WARNING: Improper chemical usage and maintenance will quickly lead to severe issues with your spa and can affect the spa equipment, jets, pumps, and all other components in contact with the spa water. **All Opulence Spas are susceptible to damage from unbalanced spa water.**

Always maintain your water chemistry within the following parameters.

pH	7.2 - 7.8
Chlorine	1.0 - 3.0 ppm
Bromine	2.0 - 5.0 ppm
Total Alkalinity	100 - 120 ppm
Calcium Hardness	150 - 250 ppm

Electrical

All self contained spas use 120VAC or 240VAC electrical spa packs.

120VAC: requires an isolated 15 Amp circuit breaker, an isolated circuit with no other appliances or lights on the circuit at any time. Extension cords are not to be used in conjunction with the operations of the spa. Low voltage damage could result and this is not covered under warranty.

IMPORTANT: Opulence Spas with 110V means that the jets and heater will not work at the same time.

NOTE: All components must be 120V. No 240V components allowable.

240VAC: Depending on the model of the spa, it will require either a 40, 50, or 60 Amp dedicated circuit breaker with the proper wire size (gauge) based on the length of the run.

The electrical circuit must be installed by a certified electrician and approved by a local building or electrical inspector.

Surface

Your new portable spa must be placed on a firm, flat, and level surface, so that the weight is supported uniformly. We recommend no less than a 3" (93 mm) thick concrete slab. Wood decking or balconies must be constructed to support 150 pounds per square foot (730 kg/m²). Refer to the local and current building codes in your area. Should your new spa need to go through the gate or space – restricted area, ensure you've communicated those limitations with your dealer to avoid delivery complications.

NOTE: Damage caused by alternate decking methods may avoid the spa warranty. Contact your dealer if you have any questions regarding spa location and placement.

Transport

Your new spa has left the factory cleaned and polished and ready to begin operation after passing our many quality and operational tests. However, depending on your location in the world, your spa may have spent days or even weeks in transit before arriving at your home. Please ensure that before filling or operating your Opulence Spa that you check all electrical and plumbing connections are securely connected in the equipment area as they might have loosened during shipping. If any dirt has accumulated, you will want to remove with a clean cloth or sponge using warm water.

IMPORTANT SAFETY INSTRUCTIONS

READ AND FOLLOW ALL INSTRUCTIONS CAREFULLY

DANGER: Risk of Injury. The suction fittings in this Opulence Spa are sized to match the specific water flow created by the pump. Should the need arise to replace the suction fittings or the pump, be sure that the flow rates are compatible. Never operate the Opulence Spa if the suction fittings are broken or missing. Never replace a suction fitting with one rated less than the flow rate marked on the original suction fitting.

DANGER: Risk of Accidental Drowning. Do not allow children to be in or around the spa without adult supervision. Keep the spa cover on and locked when not in use. See instructions enclosed with the cover for locking procedures.

DANGER: Risk of Electrical Shock. The electrical supply for this product must include a suitably rated switch or circuit breaker to open all ungrounded supply conductors to comply with section 422-20 of the National Electrical Code, ANSI/NFPA 70. The disconnect must be readily accessible and visible to the Opulence Spa occupant but installed at least 5 feet (1.5 m) from the Opulence Spa water.

READ, FOLLOW AND SAVE THESE INSTRUCTIONS

- a) A green colored terminal or a terminal marked G, Gr, Ground, Grounding or the symbol * is located inside the supply terminal box or compartment. To reduce the risk of electric shock, this terminal must be connected to the grounding means provided in the electric supply service panel with a continuous copper wire equivalent in size to the circuit conductors that supply this equipment.
- b) At least two lugs marked "Bonding Lugs" are provided on the external surface or on the inside of the supply terminal box compartment. To reduce the risk of electric shock, connect the local common bonding grid in the area of the Opulence Spa to these terminals with an insulated or bare copper conductor not smaller than No. 6 AWG.
- c) All field-installed metal components such as rails, ladders, drains or other similar hardware within 5 feet (1.5 m) of the Opulence Spa shall be bonded to the equipment grounding buss with copper conductors not smaller than No. 6 AWG.

WARNING: To Reduce the Risk of Injury. The water in a Opulence Spa should never exceed 104 °F (40 °C). Water temperatures between 100 °F (38 °C) and 104 °F (40 °C) are considered safe for a healthy adult. Lower water temperatures are recommended for young children and when Opulence Spa use exceeds 10 minutes.

Since excessive water temperatures have a high potential for causing fetal damage during the early months of pregnancy, pregnant or possibly pregnant women should limit Opulence Spa water temperatures to 100 °F (38 °C). If pregnant, please consult your physician before using a Opulence Spa. Before entering the Opulence Spa, the user should measure the water temperature with an accurate thermometer since the tolerance of water temperature regulating devices may vary as much as +/- 5 °F (2 °C). Persons suffering from obesity or a medical history of heart disease, low or high blood pressure, circulatory system problems or diabetes should consult a physician before using a Opulence Spa.

CAUTION: Risk of Hyperthermia. Hyperthermia occurs when the internal temperature of the body reaches a level several degrees above the normal body temperature of 98.6 °F (37 °C). The symptoms of hyperthermia include drowsiness, lethargy, and an increase in the internal temperature of the body. Prolonged immersion in hot water may induce hyperthermia. A description of the causes, symptoms, and effects of hyperthermia are as follows:

- Unawareness of impending hazard;
- Failure to perceive heat;
- Failure to recognize the need to exit Opulence Spa;
- Physical inability to exit Opulence Spa;
- Fetal damage in pregnant women; and
- Unconsciousness and danger of drowning.

WARNING: Children should not use Opulence Spas without adult supervision.

WARNING: Do not use Opulence Spas unless all suction guards are installed to prevent body and hair entrapment.

WARNING: People with infectious diseases should not use a Opulence Spa.

WARNING: To avoid injury, exercise care when entering or exiting the Opulence Spa.

WARNING: Do not use drugs or alcohol before or during the use of Opulence Spa to avoid unconsciousness and possible drowning. The use of alcohol or drugs can greatly increase the risk of fatal hyperthermia in Opulence Spas.

WARNING: Pregnant or possibly pregnant women should consult a physician before using a Opulence Spa.

WARNING: Water temperature in excess of 38 °C (100 °F) may be injurious to your health. Before entering the Opulence Spa, measure the water temperature with an accurate thermometer.

WARNING: Prolonged immersion in a Opulence Spa may be injurious to your health.

WARNING: Do not permit electric appliances (such as lights, telephone, radio, television, etc.) within 5 feet (1.5m) of this Opulence Spa unless such appliances are built-in by the manufacturer.

WARNING: People using medication and/or having an adverse medical history should consult a physician before using a spa or Opulence Spa.

WARNING: People with infectious diseases should not use a spa or Opulence Spa.

WARNING: Do not use a spa or Opulence Spa immediately following strenuous exercise.

WARNING: Prolonged immersion in a spa or Opulence Spa may be injurious to your health.

WARNING: Maintain water chemistry in accordance with the Manufacturers instructions.

WARNING: The equipment and controls shall be located no less than 1.5 meters horizontally from the spa or Opulence Spa.

WARNING: This product can expose you to chemicals including Acrylonitrile, which is known to the state of California to cause cancer. For mor information, go to www.P65Warnings.ca.gov

CAUTION: Observe a reasonable time limit when using the Opulence Spa. Long exposures at higher temperatures can cause high body temperature. Symptoms may include dizziness, nausea, fainting, drowsiness, and reduced awareness. These effects could possibly result in drowning.

CAUTION: Enter and exit the Opulence Spa slowly. Wet surfaces can be very slippery.

CAUTION: Proper chemical maintenance of Opulence Spa water is necessary to maintain safe water and prevent possible damage to Opulence Spa components. Maintain water chemistry in accordance with manufacturer's instructions.

CAUTION: Use the straps and clip tie downs to secure the cover when not in use. This will help to discourage unsupervised children from entering the Opulence Spa and keep the Opulence Spa cover secure in high-wind conditions. There is no representation that the cover, clip tie-downs, or actual locks will prevent access to the Opulence Spa.

CAUTION: For exercise, the water should not exceed 90 °F (32 °C).

GLOSSARY OF TERMS



AIR CONTROL: Mounted generally on the lip of the spa, it induces warm air from the equipment enclosure into the jet stream through venturi action.



WATER DIVERTER: The large diverter is used to divert water to various seats in the spa.



FILTER AIR RELIEF VALVE: Located on top of dome filter lid. Used to release air from the filter.



SKIMMER BLEEDER VALVE: Located in the skimmer area, needs to be loosened while filling the spa. This will help eliminate air from being trapped in the spa equipment.



OZONATOR:The ozonator produces natural ozone through the Corona Discharge process. Continuous use of an ozonator can dramatically reduce sanitizer consumption.



CONTROL BOX (Pack): Basically the “heart” of the spa. Power is distributed to any/all functions of the spa: pumps, ozonator, LED lighting, heater element, etc.



TOPSIDE CONTROL: Mounted on the top lip of the spa and controls the functions of the spa.



EQUIPMENT ENCLOSURE: An enclosure that houses the control box, pump(s) and other electrical components.



FILTER: The filter cleans the spa by passing water through a filter cartridge where debris and impurities are removed. Top load filter means the filter cartridge is accessible through the top of the spa. Front access skimmer means cartridge is accessed through door of skimmer.



FLOOR DRAIN: The floor drain is covered by a grate-type cover and is utilized when draining the spa. It also acts as the return for the ozonator. You will see bubbles emitted from this drain, which is the result of water mixing with the ozone output.



GATE VALVES: Red with a grey handle is located at the inlet and outlet of the pumping system. Used while servicing the spa equipment, the valves open or close the water flow to the equipment. To remain open for normal use, turn fully counterclockwise.



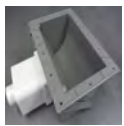
KNIFE VALVES: A white "T"-handled valve, same functions as Gate valve (see above), except to open them you pull up on handle.



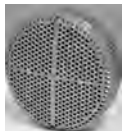
HEATER: The electronically controlled heater raises the temperature of the spa to the desired setting.



LEDs: LEDs and their special lenses can be used to achieve the desired mood lighting in the spa and spa jets.



SKIMMER: This is the rectangular outlet at the water level. The skimmer removes surface debris to the filter. The water level in the spa should be kept $\frac{1}{2}$ to $\frac{3}{4}$ up on the skimmer for optimum operation.



SUCTION: During operation of the equipment, the suction works in conjunction with the skimmer to draw water from the bottom of the spa through the filter, keeping the spa sparkling clean.



NECK JET: Direction-controllable jet for soothing neck massage.



ADJUSTABLE CLUSTER JET: Our adjustable, high-intensity hydrotherapy jet.



DIRECTIONAL JET: Provides a straight flow for a therapeutic massage.



ROTATIONAL JET: Provides a unidirectional circular therapeutic massage.



MASSAGE JET: Delivers massage in staccato bursts over a narrow, focused area.



VOLCANO/WHIRLPOOL JET: high-output jet designed for foot and leg massage.



LAMINAR FLOW: A thin stream of water that arcs from the spa lip.

PREPARATION, SET-UP AND LOCATION FOR YOUR NEW SPA:

- You want to keep in mind how you intend to use the spa and plan the location accordingly.
- How close is the spa from the exit or entrance to your house? (consider the cold weather)
- Is the path to your spa clean of debris, sand, grass? (so as not to track into the spa)
- Is there protection from wind, inclement weather?
- Can neighbors or passersby see the spa?

NOTE: Allow for service access: Many spa owners enjoy placing their spa in a decorative enclosure or a deck. Keep in mind that you need to have access to the equipment for maintenance and the spa should be able to be moved or lifted without destroying the special enclosure or its surroundings. You should discuss this with your dealer when designing the location. Extension cords are not to be used in conjunction with the operations of the spa. Low voltage damage could result and this is not covered by warranty.

NOTE: All components must be 120V; No 240V components allowable.

240VAC: Depending on the model of spa, it will require either a 40 Amp, 50 Amp, or 60 Amp dedicated circuit breaker, GFCI, with the proper wire size based on the length of the run. The electrical circuit must be installed by a certified electrician and approved by a local building or electrical inspector.

IMPORTANT: For spas or hot tubs installed indoors, care should be taken to ensure adequate ventilation for the indoor space to avoid undesired buildup of humidity due to spa water. For additional information on ventilation and humidity guidelines, see the ASHRAE Handbook – HVAC Applications, I-P Edition, Sections 4.5, 4.6, and 4.7.

DISCLAIMER: The pictures displayed above are for reference purpose only. Some parts may be different depending upon the spa model.

OPULENCE SPA GENERAL LAYOUT (Your spa may look different)



- | | |
|---|----------------------------------|
| 1. Pillows | 11. Laminar Jet Shut Off |
| 2. Air Control | 12. Coast Connect Shut Off |
| 3. Extreme XL Water Diverters | 13. Coast Connect |
| 4. Laminar Jets | 14. Volcano Jet |
| 5. Hydro Cyclonic Water Filtration System | 15. Spa Drain |
| 6. Poly Jets | 16. 7" Spa Lights |
| 7. Cluster Jets | 17. Suction |
| 8. Neck Jets | 18. 24" Fusion Waterfall |
| 9. Control Panel | 19. Sweeper Jet |
| 10. Skimmer | 20. 24" Fusion Waterfall Shutoff |
| | 21. Carousel Jet |

DISCLAIMER: At the time of print, this manual is accurate in its information. Coast Spas reserves all the rights to change/modify any spa designs and/or features without notification. To check on updates or for other information, please visit www.coastspas.com

OPULENCE SERIES COLLECTION
(Your spa may look different)



Apex Bench



Apex Lounge



Apex Bench Curve



Apex Lounge curve

DISCLAIMER: At the time of print, this manual is accurate in its information. Coast Spas reserves all the rights to change/modify any spa designs and/or features without notification. To check on updates or for other information, please visit www.coastspas.com

OPULENCE SERIES COLLECTION
(Your spa may look different)



Element Bench



Element Lounge



Element Bench Curve



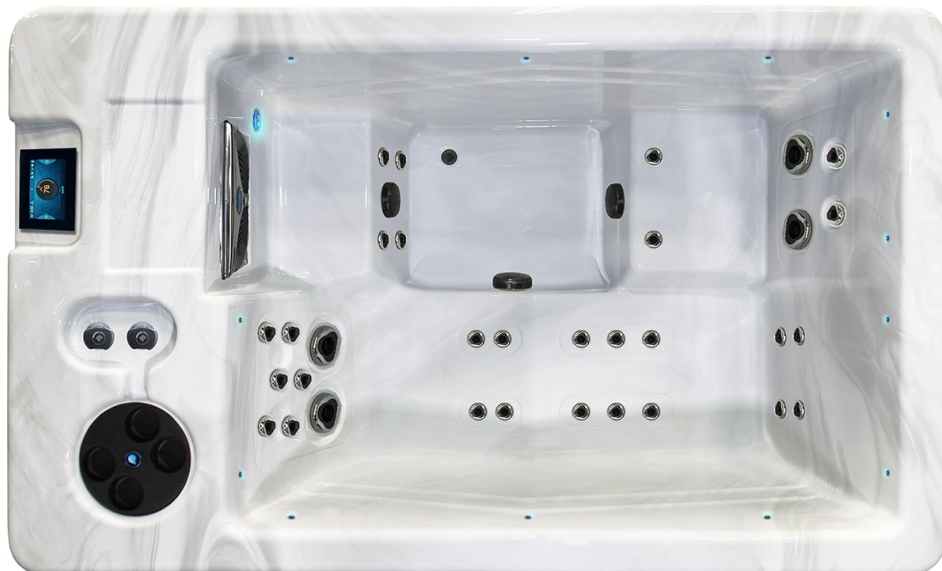
Element Lounge curve

DISCLAIMER: At the time of print, this manual is accurate in its information. Coast Spas reserves all the rights to change/modify any spa designs and/or features without notification. To check on updates or for other information, please visit www.coastspas.com

OPULENCE SERIES COLLECTION
(Your spa may look different)



2Purfikt

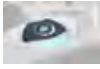


Duoscape

DISCLAIMER: At the time of print, this manual is accurate in its information. Coast Spas reserves all the rights to change/modify any spa designs and/or features without notification. To check on updates or for other information, please visit www.coastspas.com

THE OPULENCE SERIES SPAS INCLUDES

Choose model to see specific features and options. All features below may not be included with all models.



Extreme XL Water Diverters LED. Divert the flow of water to specific seats in your Spa.



Air Controls. Allow air to mix with the water being supplied to your massage jets.



Our Opulence **Trillium Jets** are made to deliver the ultimate hydrotherapy experience.



The **Coast Spas Volcano Jet** is installed near the bottom of the Spa and points upward to the surface. This jet is so powerful that it comes standard with its very own diverter valve so that power can be diverted to adjust the intensity.



Coast Spas developed the **Hydro Cyclonic Filtration System**[®]. Not only is it more efficient and faster than a skim filtration system but it also removes the dirty filter canisters from the bathing area.



Your Spa has the ability to be equipped with the **Worldwide Spa Remote** hardware that is required to take advantage of nearly limitless control and monitoring of your Spa.



Coast Spas saves you all the trouble and money with the **Self-Cleaning Sweeper Jet**. The Sweeper Jet is positioned near the spa floor with its fan-like nozzle aimed downwards, and is automatically activated on daily filtration cycles.



The raised back of our Curve and Cascade models shelter you from the wind as well as provide a private area in your Spa. The raised back also allows proper placement of our 24" inch waterfall so the water will cascade over your shoulders like a warm blanket.



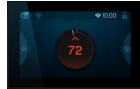
Streaming **Water Ropes - Laminars**. Provides the soothing sound of running water. Adds a stunning look to the profile of the Spa.



Extreme[®] Power'sage Zone: Two powerful deep tissue jets where you need them most, targeting areas where we most commonly feel tension



24" Fusion Waterfall: At one time waterfalls were just to add soothing sounds and a relaxing ambiance to your Spa. Coast Spas[®] changes that by putting you into the waterfall, giving you a feeling of pure relaxation and complete tranquility.



Touchscreen Controls: Color Touch Screen Controls. This easy-to-use control panel features a large multilingual color LCD interface with intuitive icons and animations. There are no buttons to press, just touch the feature you want to control on the touch sensitive screen.

SPA COMFORTS

- Plush Headrests
- Beverage Holders
- Anti-Slip Textured Floor
- Ergonomic Seating
- Multi-Level Seating
- Stainless Steel Oversized Monster[™] Skimmer

BUILT TO LAST[®]

- Programmable Filtration
- Freeze Protection
- Owens Corning[®] Fiberglass Shell with 1 1/4" Steel Reinforcement
- Steel Reinforced Spa Acrylic
- Pressure Treated Frame
- Quick Access Gate Valves
- Recessed Floor Drain
- Recessed Thread-In Jet-Pockets[™]
- Super-Sealed[™] Barb & Clamp Plumbing

DISCLAIMER: The pictures displayed above are for reference purpose only. Some parts may be different depending upon the spa model.

DISCLAIMER: At the time of print, this manual is accurate in its information. Coast Spas reserves all the rights to change/modify any spa designs and/or features without notification. To check on updates or for other information, please visit www.coastspas.com.



START UP GUIDE

Opulence Series

PREP FOR FILLING

! PLEASE READ ALL INSTRUCTIONS BELOW BEFORE FILLING THE SPA



Using a cloth and water, wipe away any dirt/dust collected from transport. Ensure all jets are open by turning the face counter clockwise.



Ensure all plumbing and electrical connections are securely connected and tightened as they can come loose during transit.



Ensure that any gate/knife valves are fully open.



Remove the filter lock ring and lid.



Remove filter and take it out of the plastic transport bag. Leave filter canister open when filling.



Remove skimmer cavity grate cover by sliding it upwards.



Loosen (do not remove) the air bleeder valve located in the skimmer cavity.

FILLING YOUR SPA

! DO NOT USE HOT WATER TO FILL YOUR SPA

! DO NOT USE WATER FROM A WATER SOFTENER



Place fill hose into open filter canister and fill hot tub until water is 2/3 of the way up the skimmer opening.



When filled all massage jets (excluding neck jets) should be under water.



Remove fill hose from filter canister.

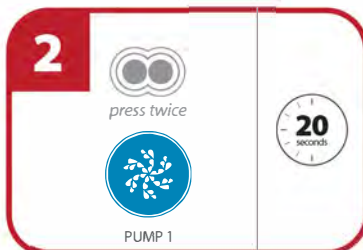


Put filter back into filter canister. Then put back on the filter canister lid and tighten locking ring.

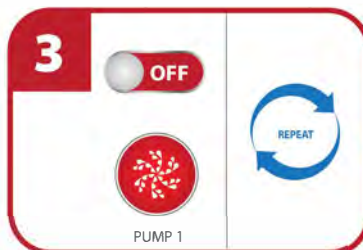
POWERING UP YOUR SPA



Turn power on at the main breaker.



Turn pump 1 on high speed for 20 seconds by pressing the pump icon twice.



Turn pump 1 off by pressing the pump one icon once. Repeat steps 2 and 3 until air is removed from pump 1 and water is coming from jets.



Tighten the air bleeder valve located in the skimmer cavity. Set your hot tub temperature. Get ready to enjoy!

SPA CARE GUIDE

Your Authorized Dealer carries a wide variety of care and maintenance products. For more information please contact your Dealer.

REQUIRED FILTER MAINTENANCE

Your new Opulence Spa is equipped with a filter cartridge. To ensure maximum water quality at all times, you should replace the filter cartridge every six months, or earlier as necessary. The filter cartridge is designed to be thrown away! Attempts to re-use the filter cartridge may result in the re-release of unwanted particles back into the Opulence Spa.

PLEATCO DUAL CORE FILTERS

Your Opulence Spa/spa comes with a premium filter. Most come with equipped with a Pleatco DualCore Filter, which does a better job of cleaning your spa water than any other filter cartridge. The DualCore filter has two layers of filtration media, the outer layer and the inner layer. Both are engineered to remove different particles from your water.



The outer core is similar to a Opulence filter which traps larger debris, while the inner core filters the water for particles down to 3 microns in size. The inner core is easily removed and both filter media can be cleaned. Keeping your spa water clean and refreshing is extremely important for your enjoyment of your Opulence Spa. Our Opulence Spas come with only the best filters available in order to ensure your satisfaction.

REQUIRED WATER REPLACEMENT

You should replace the Opulence Spa's water every 3-6 months. The frequency will depend on a number of variables including frequency of use, number of bathers and attention paid to the water quality maintenance. You will know it is time for a change when you can no longer get the normal feel or sparkle to the water, even though the key water balance measurements are all within the recommended ranges.

HEADREST / PILLOW CARE

The pillows can be removed for easy cleaning and maintenance. All pillows have plugs within the pillow itself. To remove the pillow, grab the bottom edge firmly and pull outward.

This will allow the pillows to pop-out from the receptacle in the spa shell. To reinstall the pillow you will align the pillow plug with the receptacle. Press/hit the front side of the pillow firmly, which will insert the plug back into the receptacle.

- Proper water chemistry must be maintained. Your Opulence Spa pillows are easily and quickly damaged when exposed to unbalanced spa water. If you suspect that your chemicals may be unbalanced, remove your pillows immediately until the water has been restored to suggested conditions.
- Do not sit on the pillows
- Do not pull on the pillows
- Pillows should be cleaned using a soft cloth and mild soap, then wiped with a conditioner. We recommend that pillows be washed each time you drain you spa.

This Limited Warranty is void if failure is caused by accident, acts of nature, acts of God, or other causes beyond the control of Coast Spas Manufacturing. Neglect, misuse and abuse include any installation, operation, or maintenance of the spa other than in accordance with the instructions contained in the owner's manual provided with the spa, including, but not limited to damage caused by operation outside the range of 34°F and 116°F or 1°C and 47°C.

Please be advised that the Spa Warranty will become void if Coast Spas or any of its selling or servicing agents determines that the spa has been exposed to Hydrogen Peroxide, TriChlor or any substance using it as an ingredient proven to be dangerous to the Spa. Any condition arising from the use of Hydrogen Peroxide or TriChlor on the spa is not a warrantable defect.

Opulence SPA INTERIOR

Your Opulence Spa has a fiberglass reinforced acrylic shell. Generally dirt and stains will not adhere to the surface. To properly clean the surface, we recommend wiping it with a soft damp cloth (or sponge) using a low sudsing household soap or liquid detergent and rinsing thoroughly with fresh water. Stubborn dirt or stains may be removed by using Spic & Span adequately dissolved in water. Contact your dealer and inquire about maintenance packages.

DO NOT use any cleaning products containing abrasives or solvents, since these could damage the surface. Harsh chemicals should never be used on acrylic surfaces. Damage to the shell due to the use of harsh chemicals is not covered under the warranty.

Exposure to direct sun without water in this spa can cause spa surface deformation. Such exposure will void the warranty.

DO NOT leave your Opulence Spa drained and in direct sunlight for extended periods of time. Extreme heat could cause damage to the acrylic surface and may induce an effect known as "crazing".

STAINLESS STEEL CONTROLS AND COMPONENTS ABOVE THE WATER LINE

To preserve the stainless steel finish of the controls and components above the water line, we recommend they be wiped with a dry soft cloth after each use of your Opulence Spa. In addition, off-gas your spa by removing the cover for approximately 30 minutes multiple times per week (if not in use) and after every shock treatment.

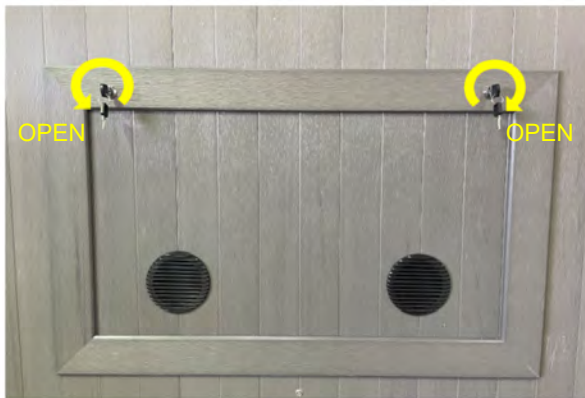
CABINET CARE

Never spray cabinets with a high-pressure garden hose or pressure washer for any reason. This action may induce an electrical short in the Opulence Spa's electrical equipment.

VINYL CABINET

Vinyl cabinets are made of a rigid polymer that combines the durability of plastic with the beauty of real wood. This cabinet is manufactured so that it won't crack, peel, blister or delaminate even after prolonged exposure to the elements. We recommend wiping the cabinet with a soft damp cloth (or sponge) using household soap or liquid detergent and rinsing with fresh water thoroughly. **DO NOT** use abrasive cleansers or material as this may damage the surface.

Vinyl cabinet door opening instructions



SLATE CABINETS

Optional Slate cabinets are custom-built and painted in our factory. We recommend lightly brushing the cabinet with a **SOFT** bristle brush to remove any dirt or stains. For more information on the care of your Slate cabinet, please contact your Local Dealer.

COVER CARE

A well cared for spa cover is a thing of beauty in its own right. Be sure to clean and condition your cover at least once a month (more often if needed). Your cover needs to be cleaned and conditioned because vinyl can be dry and become brittle, spoiling your spa's appearance.

Dry, brittle vinyl can also tear at the seams and stress points. Quality materials, internal sewn reinforcing and careful workmanship can only go so far against the ravages of Mother Nature. See the specific Warranty card enclosed with your cover for further details.

- When you shock your spa you need to remove the cover for a minimum of 30 minutes to ensure that the chemical gas off can escape from the spa.
- You are required to keep the spa covered at all time when not in use to protect the shell from harmful UV rays.
- A covered spa will use less electricity when maintaining the desired water temperature.
- See the manual that comes with the cover for proper mounting of the cover locks.
- The cover should remain locked at all times to prevent unauthorized entry into the spa and potential drowning.
- Do not Sit, Stand or Lie on your cover. Nor should you place any heavy object on top of the cover as this may damage the structure.

VERY IMPORTANT: We recommend a vinyl conditioner for your spa cover. Your local dealer carries a wide variety of care and maintenance products. Choose a pleasant day each month to remove your cover from the spa and lay it on a flat surface accessible by garden hose. Douse the cover with a healthy amount of water from the hose or a bucket to rinse away loose dirt or debris.

Using a soft bristle brush and a mild solution of dish washing liquid (about one teaspoon of detergent to two gallons of water), and with a gentle circular motion, scrub the cover clean. Be careful not to let any areas of the cover dry before they're thoroughly rinsed. Now apply the vinyl conditioner as directed on the container. Massage the conditioner into the cover in a gentle but firm manner. Before replacing the cover on your spa, wipe and rinse any dirt from the bottom of the cover. When you are ready, put the cover on the spa.

NOTE: To remove tree sap, use lighter fluid (not charcoal lighter but the fluid used in cigarette lighters). Use sparingly, then immediately apply conditioner to that area. All waterfalls and laminar flow water features should be turned off when the spa is not in use to avoid heat and water loss.



BASIC INSTALLATION AND CONFIGURATION GUIDELINES

WARNING! Qualified Technician Required for Service and Installation

ELECTRICAL REQUIREMENTS

All self contained spas use 120VAC or 240VAC electrical spa packs. These instructions describe the only acceptable electrical wiring procedures. Spas wired in any other way will void your warranty and may result in serious injury. All installations should be completed by a certified electrician. Failure to comply with state and local codes may result in fire or personal injury and will be the sole responsibility of the spa owner.

120VAC: This requires an isolated 15 Amp circuit breaker. This needs to be an isolated circuit with no other appliances or lights on this circuit at any time. Extension cords are not to be used in conjunction with the operations of the spa. Low voltage damage could result and this is not covered by warranty.

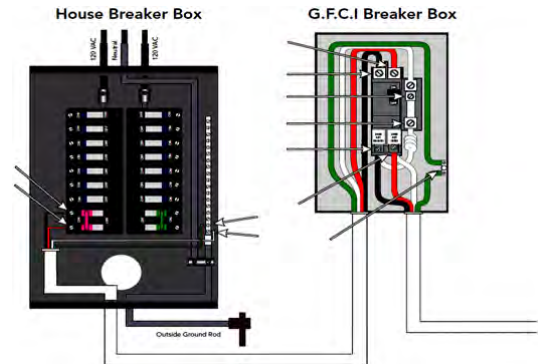
NOTE: All components must be 120V; No 240V components allowable.

240VAC: Depending on the model of spa, it will require either a 40 Amp, 50 Amp, or 60 Amp dedicated circuit breaker, GFCI, with the proper wire size based on the length of the run. The electrical circuit must be installed by a certified electrician and approved by a local building or electrical inspector.

Use minimum 6AWG copper conductors only. Torque field connections between 21 and 23 in lbs. Readily accessible disconnecting means to be provided at time of installation.

Permanently connected Power Supply

Connect only to a circuit protected by a Class A Ground Fault Circuit Interrupter (GFCI) or Residual Current Device (RCD) mounted at least 5' (1.52M) from the inside walls of the spa/ Opulence Spa and in line of sight from the equipment compartment.



CSA ENCLOSURE: TYPE 2

Refer to Wiring Diagram inside the cover of the control enclosure. Refer to Installation and Safety Instructions provided by the spa manufacturer.

WARNING! GFCI OR RCD PROTECTION.

The Owner should test and reset the GFCI or RCD on a regular basis to verify its function.

WARNING! SHOCK HAZARD! NO USER SERVICEABLE PARTS.

Do not attempt service of this control system. Contact your dealer or service organization for assistance. Follow all owner's manual power connection instructions. Installation must be performed by a licensed electrician and all grounding connections must be properly installed. Disconnect the electric power before servicing. Keep access door closed.

CSA COMPLIANCE

CAUTION:

- Test the ground fault circuit interrupter before each use of the spa.
- Read the instruction manual.
- Adequate drainage must be provided if the equipment is to be installed in a pit.
- For use only within an enclosure rated CSA Enclosure 3.

DISCLAIMER: There are no user serviceable parts in the GFCI compartment. All the services and repairs should be performed by certified electrician.

- Connect only to a circuit protected by a Class A ground fault circuit interrupter or residual current device.
- To ensure continued protection against shock hazard, use only identical replacement parts when servicing.
- Install a suitably rated suction guard to match the maximum flow rate marked.

WARNING:

- Water temperature in excess of 38°C (100.4°F) may be injurious to your health.
- Disconnect the electrical power before servicing.

CAUTION: When using this electrical equipment, basic safety precautions should always be followed.

OPULENCE SPA MAINTENANCE PROCEDURES**FILTER MAINTENANCE**

The spa filter is one of the most important maintenance items of a Cascade Spa. The filter is there to remove debris from the water and needs to be cleaned on a regular basis. Failure to do so may result in poor performance, poor water clarity and could prevent the spa from heating. Filtration starts as soon as flow is steady through the filter. As the filter cartridge removes the debris from the spa water, the accumulated debris causes flow resistance.

CLEANING AND REPLACING FILTER CARTRIDGE

Your spa filter has been designed for quick and easy maintenance. The filter cartridge should be rinsed by hose once a week and cleaned with a cartridge cleaner once a month. A second filter cartridge is recommended and will speed up this process. This can be purchased from your local dealer.

TOP LOAD FILTERS

- Turn power OFF at the breaker.
- Loosen air relief valve, then remove retainer ring.
- Pull filter lid straight up to remove.
- Do not twist or pull the filter lid up on an angle. This could cause damage to the filter canister, especially in freezing conditions.
- Remove filter cartridge and clean with a garden hose and a high-pressure nozzle. Periodically you may need to soak your filter in a "cartridge filter cleaner" to remove excess minerals and/or oils.
- Rinse filter thoroughly before installing. Clean O-ring on filter lid and apply a light film of silicone lubricant to the O-ring. Do not use a petroleum-based lubricant as it could damage the ring. Consult your dealer to purchase suitable lubricant.
- Place clean Cartridge in filter canister.
- Replace filter lid and re-tighten retaining ring (finger tight only)

NOTE: Make sure the O-ring is on the air relief valve, and is finger tight prior to starting the pump. This O-ring should periodically be lubricated with a silicone lubricant.

- There is a 3/8" clear line coming from the filter area and this goes to the bottom corner of the spa. This drains all the water from around the filter canister.
- This is a good time to check the skimmer basket. Bring skimmer door (weir) forward and unscrew basket. Clean out debris and reinstall.



WATER QUALITY MAINTENANCE

Maintaining the quality of the water within the specified limits will serve to enhance your enjoyment and prolong the life of the Opulence Spa's equipment. It is a fairly simple task, but it requires regular attention because the water chemistry involved is a balance of several factors. There is no simple formula, and there is no avoiding it. An indifferent approach to water maintenance will result in poor and potentially harmful conditions for soaking and even damage to your Opulence Spa investment. The most important thing to keep in mind is that preventing poor water chemistry is much easier than correcting poor water chemistry. For specific guidance on maintaining water quality, consult your Authorized Dealer who can recommend appropriate chemical products for sanitizing and maintaining your Opulence Spa.

MAINTAIN HEALTHY SPA WATER

Important! When maintaining your Opulence Spa's water chemistry, ensure that your cover is removed during any aggressive treatments to allow for dissipation into the air. Take care to remove the cover slowly and let chemicals deplete if you are uncertain if your water is properly balanced. ***Always maintain your Opulence Spa's water chemistry within the following parameters:***

pH: pH is a measure of relative acidity or alkalinity of water and is measured on a scale of 0 to 14. The midpoint of 7 is said to be neutral, above which is alkaline and below which is acidic. In Opulence Spa water, it is very important to maintain a slightly alkaline condition of 7.2 to 7.8. Problems become proportionately severe the further outside of this range the water gets. A low pH will be corrosive to metals in the Opulence Spa equipment. A high pH will cause minerals to deposit on the interior surface (scaling), cloudy water, and a prematurely dirty filter. In addition, the ability of the sanitation agents to keep the Opulence Spa clean is severely affected as the pH moves beyond the ideal range. That is why almost all Opulence Spa water test kits contain a measure for pH as well as sanitizer. DO NOT use strong acids like Hydrochloric acids or Muriatic acid to balance the pH as it could severely damage the spa shell.

Sanitizer (Chlorine or Bromine): To destroy bacteria and organic compounds in the Opulence Spa water by breaking them down into non-harmful levels which get filtered out. A sanitizer must be used regularly, either chlorine or bromine. Sanitizing your spa water is the most important spa maintenance you can do for yourself.

Total Alkalinity (TA) is the measure of the dissolved alkaline agents such as carbonates and bicarbonates. These alkaline agents help prevent rapid changes in pH by acting as a pH buffer.

Controlling alkalinity can help keep your pH in the appropriate range thereby lessening the need for pH balancing. If the TA is too low the pH level will fluctuate rapidly from high to low. If the TA is too high the pH will tend to be too high and will be very difficult to bring back down.

Calcium Hardness: This is a measurement of dissolved calcium in the water. Calcium will help control the corrosive nature of the spa's water. Low calcium hardness causes spa and equipment corrosion whereas high calcium hardness results in cloudy water and scale build-up on the spa and the equipments.

WARNING: Never store chemicals inside the equipment area of your spa.

IMPORTANT: DO NOT use Hydrogen Peroxide based sanitizers in your spa. When using Chlorine or Bromine tablets you must use a floating dispenser. These chemicals can have an extremely corrosive effect on certain materials in the spa. Damage caused by use of these chemicals, or improper use of any chemicals, is not covered under the spa's warranty.

OTHER ADDITIVES: Many other additives are available for your spa. Some are necessary to compensate for out-of-balance water, some aid in cosmetic water treatment and others simply alter the feel or smell of the water. Your Authorized Dealer can advise you on the use of these additives.



Look for these specialized cleaning attachments at your local dealership.

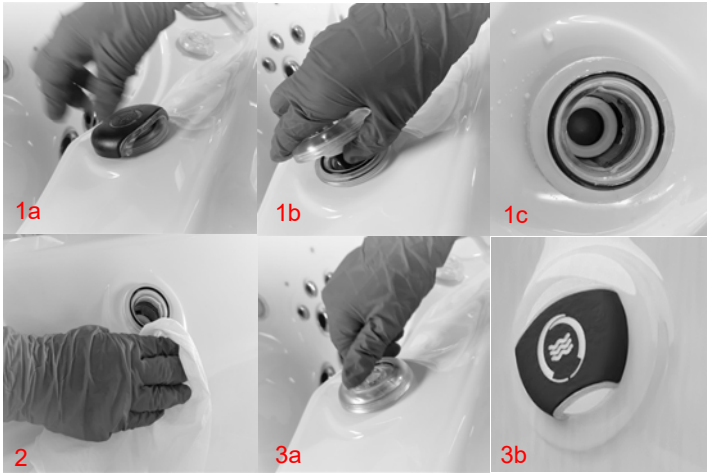
WATER DIVERTER MAINTENANCE

CAUTION: Turn off the spa from main GFCI breaker to carry out any maintenance procedures.

Steps to clean water diverters:

1. Pull the diverter cap off and rotate the diverter body counter clock wise and pull out the assembly (Picture 1a to 1c).
2. Using clean piece of cloth, remove the dust particles or depositions (Picture 2).

3. Assemble the diverter body by inserting the body back by rotating the jet body clock-wise (Picture 3a and 3b). Attach the diverter cap.



IMPORTANT: The spa or swim spa water shall be tested and treated in accordance with applicable local codes. For Pool and Hot Tub Water Sanitation, see [Uniform Swimming Pool, Spa and Hot Tub Code, Chapter 5 – Water Quality](#).

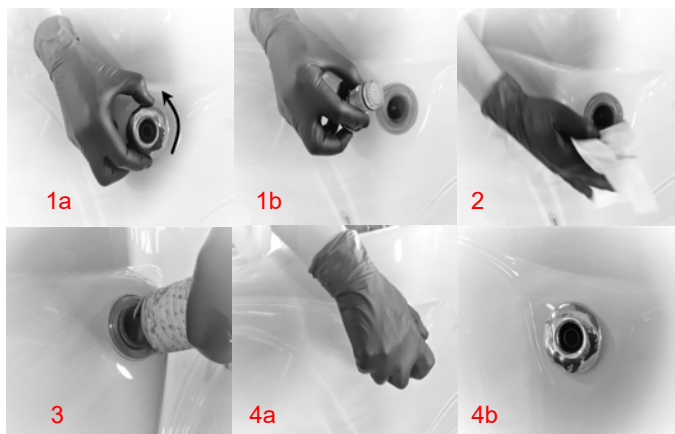
JET MAINTENANCE

CAUTION: Turn off the spa from main GFCI breaker to carry out any maintenance procedures.

It is important to regularly clean the jets to prevent any unwanted depositions and potential damage to the plumbing. It is the responsibility of the customer to regularly perform the maintenance procedures. To clean and maintain optimum jet functions, follow the maintenance instructions below.

LAMINAR FLOW JET MAINTENANCE INSTRUCTIONS

1. Rotate counter clock wise and pull out the jet body (Picture 1a and 1b).
2. Using clean piece of cloth, remove the dust particles or debris (Picture 2).
3. Remove the unreachable debris with the help of vacuum cleaner (Picture 3).
4. Assemble the jet insert back by rotating the jet body clock-wise (Picture 4a and 4b).





CHEMICALS (USA)

Coast Spas chemicals play a vital role in ensuring the longevity, cleanliness, and overall enjoyment of your hot tub, swim spa or cold plunge experience.

For optimal performance and to ensure the longevity of your Coast Spas hot tub, swim spa & cold plunge, we strongly recommend using Coast Spas chemicals. Our specially formulated chemicals have been crafted with the utmost precision and care, utilizing premium-grade ingredients and formulations designed to complement the unique engineering of your Coast Spas hot tub, swim spas & cold plunge.

The use of alternative chemical products may lead to unintended chemical reactions, water imbalance, and possible damage to your spa's components. It is important to note that failure to use Coast Spas chemicals may impact your warranty coverage. To safeguard your investment and enjoy uninterrupted relaxation, trust in the quality and compatibility of Coast Spas chemicals — the ideal choice for your Coast Spas hot tub, swim spas & cold plunge.

SCAN THIS QR
TO DOWNLOAD
BROCHURE



SCAN ME



Coast Spas®

HIGH QUALITY FORMULATION

Coast Spas chemicals are designed to be easy to use and require minimal effort to maintain. This means that customers can spend less time worrying about maintaining their hot tubs, swim spas & cold plunge and more time enjoying them.

EASY TO USE

Coast Spas chemicals are safe and effective, providing superior user experience for customers. They are designed to work seamlessly with Coast Spas hot tubs, swim spas & cold plunge, ensuring that customers can enjoy their hot tubs, swim spa & cold plunge without any issues.

RELIABLE AND EFFICIENT

Coast Spas chemicals are safe and effective, providing a superior user experience for customers. They are designed to work seamlessly with Coast Spas hot tubs, swim spa & cold plunge, ensuring that customers can enjoy their hot tubs, swim spa & cold plunge without any issues.



CHEMICALS (CANADA)

Coast Spas chemicals play a vital role in ensuring the longevity, cleanliness, and overall enjoyment of your hot tub, swim spa & cold plunge experience.

For optimal performance and to ensure the longevity of your Coast Spas hot tub, swim spa & cold plunge, we strongly recommend using Coast Spas chemicals. Our specially formulated chemicals have been crafted with the utmost precision and care, utilizing premium-grade ingredients and formulations designed to complement the unique engineering of your Coast Spas products.

The use of alternative chemical products may lead to unintended chemical reactions, water imbalance, and possible damage to your spa's components. Moreover, it is important to note that failure to use Coast Spas chemicals may impact your warranty coverage. To safeguard your investment and enjoy uninterrupted relaxation, trust in the quality and compatibility of Coast Spas chemicals – the ideal choice for your Coast Spas hot tub, swim spa & cold plunge.

**SCAN THIS QR TO
DOWNLOAD
BROCHURE**



HIGH QUALITY FORMULATION

Coast Spas hot tub, swim spa & cold plunge chemicals are designed by a team of experienced chemists who understand the unique needs of hot tubs, swim spa & cold plunge. They are formulated to provide optimal performance and reliability in Coast Spas hot tubs, swim spas & cold plunge ensuring that customers can enjoy their hot tubs, swim spas & cold plunge for longer periods of time.

EASY TO USE

Coast Spas chemicals are designed to be easy to use and require minimal effort to maintain. This means that customers can spend less time worrying about maintaining their hot tubs, swim spa & cold plunge and more time enjoying them.

RELIABLE AND EFFICIENT

Coast Spas chemicals are safe and effective, providing a superior user experience for customers. They are designed to work seamlessly with Coast Spas hot tubs, swim spa & cold plunge, ensuring that customers can enjoy their hot tubs, swim spa & cold plunge without any issues.

WATER CLARITY TROUBLESHOOTING

PROBLEM	PROBABLE CAUSE	POTENTIAL SOLUTIONS
Water Odor	<ul style="list-style-type: none"> • Improper sanitization • Excessive organics in water • pH is too low 	<ul style="list-style-type: none"> > Add sanitizer > Shock spa with sanitizer > Adjust pH
Chlorine Odor	<ul style="list-style-type: none"> • Chloramines are too high • pH is too low 	<ul style="list-style-type: none"> > Shock spa with sanitizer > Adjust pH
Musty Odor	<ul style="list-style-type: none"> • Bacteria or Algae growth 	<ul style="list-style-type: none"> > Shock spa with sanitizer > Drain and refill spa water
Scale	<ul style="list-style-type: none"> • Total alkalinity is too high • pH is too high • High calcium content in water 	<ul style="list-style-type: none"> > Adjust total alkalinity > Adjust pH > Use stain and scale product
Stains	<ul style="list-style-type: none"> • Total alkalinity is too low • pH is too low • High metal content in water 	<ul style="list-style-type: none"> > Adjust alkalinity > Adjust pH > Use stain and scale product
Cloudy Water	<ul style="list-style-type: none"> • Poor filtration • pH is too high • Hardness is too high • Total alkalinity is too high • Suspended particles 	<ul style="list-style-type: none"> > Clean filter cartridge > Adjust pH > Adjust hardness > Adjust total alkalinity > Drain and refill spa water
Algae Growth	<ul style="list-style-type: none"> • pH is too high • Sanitizer is too low 	<ul style="list-style-type: none"> > Adjust pH > Shock spa with sanitizer > Adjust sanitizer level
Eye Irritation	<ul style="list-style-type: none"> • pH is too low • Sanitizer is too low 	<ul style="list-style-type: none"> > Adjust pH > Shock spa with sanitizer > Adjust sanitizer level
Skin Rash/Irritation	<ul style="list-style-type: none"> • Free chlorine level too high • Unsanitary water 	<ul style="list-style-type: none"> > Adjust chlorine level > Shock spa with sanitizer > Adjust sanitizer level

TROUBLESHOOTING GUIDE

SPA SYSTEM

SYMPTOM	PROBABLE CAUSE	RECOMMENDED ACTION
Spa does not work	<ul style="list-style-type: none"> Power is turned off 	<ul style="list-style-type: none"> > Reset GFCI
No display on the control panel	<ul style="list-style-type: none"> Power is turned off Defective topside control 	<ul style="list-style-type: none"> > Reset GFCI > Contact your Dealer
Letters on the control panel	<ul style="list-style-type: none"> An error has been found 	<ul style="list-style-type: none"> > Refer to the Reference Card for your control panel to verify the error. Contact your Dealer for service.

PUMP PROBLEMS

SYMPTOM	PROBABLE CAUSE	RECOMMENDED ACTION
Noisy/Loud motor	<ul style="list-style-type: none"> Air trapped in the pump Low water level Worn pump seal Defective pump 	<ul style="list-style-type: none"> > Open bleed valve in the skimmer > Add water to the spa > Contact your Dealer > Contact your Dealer
Pumps power down on their own	<ul style="list-style-type: none"> Set temperature has been reached Filtration cycle has ended Automatic time out Overheat safety protection 	<ul style="list-style-type: none"> > No problem > No problem > Pumps are set to run for a predetermined time while the spa is in use (15-20 Mins) > The pumps have a thermal overload which will prevent them from running for extended periods of time. Wait until pumps have cooled down (1+ hrs). If problem persists, contact your Dealer.
Pump running constantly, will not turn off	<ul style="list-style-type: none"> Filter cycle set to 24 hours Problem with the circuit board 	<ul style="list-style-type: none"> > Turn off 24 hour filtration > Turn power off at GFCI and contact your Dealer
Pump will not turn on	<ul style="list-style-type: none"> GFCI tripped Motor has overheated Not plugged in Damaged plug Seized motor Blown fuse Motor vent is blocked 	<ul style="list-style-type: none"> > Reset the GFCI > Let cool for 1+ hour > Plug in to the board > Contact your Dealer > Contact your Dealer > Check fuse or contact your Dealer > Clear debris from the vent

HEAT PROBLEMS	PROBABLE CAUSE	RECOMMENDED ACTION
Water will not heat	<ul style="list-style-type: none"> • Error message on control panel • Spa is in a different Heat Mode • Water level is too low • Poor water flow • Closed valves • Pump 1 is not running 	<ul style="list-style-type: none"> > Refer to the Reference Card for your control panel to verify the error > Set spa to "Standard Mode" > Add water to the spa > Clean filter & check valves > Open all valves > Contact your dealer
Water is too hot	<ul style="list-style-type: none"> • Incorrect reading • Filter cycle duration is too long • Pump speeds reversed 	<ul style="list-style-type: none"> > Verify temperature with thermometer > Reduce duration of the filter cycle > Contact your dealer
Water will not maintain heat	<ul style="list-style-type: none"> • Cover is off for extended periods of time in cold weather / cold wind. • Hot tub is wired for 110V and jets are on. 	<ul style="list-style-type: none"> > Put cover back onto hot tub and allow for heat to regenerate. Call your dealer if temperature does not increase. > Hot tubs wired for 110V only have enough power to heat or operate pumps. Turn off jets to power heater.

LIGHTING ISSUES	PROBABLE CAUSE	RECOMMENDED ACTION
Standard light will not come on	<ul style="list-style-type: none"> • Bulb has burnt out 	<ul style="list-style-type: none"> > Replace the light bulb
LED lighting not in sync	<ul style="list-style-type: none"> • Burnt out bulb/connection 	<ul style="list-style-type: none"> > Contact your dealer
LED lighting won't come on	<ul style="list-style-type: none"> • Incorrect settings 	<ul style="list-style-type: none"> > Contact your dealer

PUMPS WILL NOT PRIME	PROBABLE CAUSE	RECOMMENDED ACTION
Pump on but no water flow	<ul style="list-style-type: none"> • Air trapped in pump • No water in the pump • Closed valves 	<ul style="list-style-type: none"> > Loosen bleed valve in skimmer > Check the fill level in the spa > Open all valves

HYDROTHERAPY JETS	PROBABLE CAUSE	RECOMMENDED ACTION
Little to no water flowing from jets	<ul style="list-style-type: none"> • Jets turned off • Pump not primed • Valves are closed • Diverter set to a different seat • Dirty filter 	<ul style="list-style-type: none"> > Open jet by turning the face counter clockwise > Reset breaker to allow for the spa to prime the pump. Open bleed valve in the skimmer area > Open valves > Switch diverter > Remove and clean filter cartridge

PLUMBING SYSTEM	PROBABLE CAUSE	RECOMMENDED ACTION
Water around base of spa	<ul style="list-style-type: none"> • Loose connections • Leak from internal fitting 	<ul style="list-style-type: none"> > Hand tighten all quick disconnects and fittings. > Check gaskets and O-rings > Contact your dealer

DRAINING AND WINTERIZING

DRAINING YOUR SPA

After a period of 3-4 months, detergent residues from bathing suits and soap film will build up in your spa water. Once this happens, your spa water will appear cloudy and should probably be replaced.

- Turn power OFF at the breaker.
- Locate the drain valve (usually in the equipment area).
- Remove the safety cap and attach garden hose.
- Drain water to a convenient area. (Spa water may harm grass or plants if sanitizer levels are high.)
- When water begins to flow out of the hose, open the air relief valve located on filter lid (Hydro-Cyclonic Filtration) or Air Bleeder Valve (Skim Filtration).
- Your spa will drain except for a small portion left in the foot well. This can be removed with a sponge and pail.
- Once empty, clean as required.
- To finish, remove garden hose and attach safety cap.



WINTERIZING YOUR SPA

In many areas of the world the temperature may drop below 32° F (0°C). We recommend the spa is always filled with water and running at normal spa temperatures. By doing this you will minimize the risk of freezing within your spa. If it is necessary to leave your spa unattended for long periods of time during cold weather conditions, you should drain your spa to avoid accidental freezing caused by power outages.

Your local dealer can perform the following winterizing procedures, if you are not completely comfortable with them.

- Ensure that you have fully drained the spa (Refer to the DRAINING YOUR SPA section)
- After draining, your spa may still have water remaining in the equipment and plumbing fittings. Disconnect the hand-tightened union fittings going to and from the jet pumps. Be careful not to lose the O-rings between the unions and pump housing.

- Leave drain valve in the open position and safety cap off .
- To completely drain the plumbing lines, a wet/dry shop vacuum can be used to draw out any remaining water. Place the vacuum hose over the jet fittings in the spa as well as the plumbing lines in the equipment area. You should also disconnect the plug on the crystal clear inspection tube (if installed)
- Remove the filter cartridge and store in a warm, dry area.
- Clean the spa shell and place spa cover on spa. Be sure to lock the cover in place in case of high winds or rain.

WARNING: The instructions above should be followed accordingly when winterizing your spa however they are guidelines and potential freeze damage may still occur. All freeze damage is the sole responsibility of the spa owner and will not be covered by the warranty should it occur.

EMERGENCY SITUATIONS: To eliminate freezing in the event of equipment failure, use a 100-watt light bulb or small heater via extension cord and place it in the equipment area, keeping it away from plumbing lines. This will help for a short period of time until proper service can be rendered.



DRAINING INSTRUCTIONS

1. On the control panel (settings) select **hold**. This will suspend all functions so that the spa can start to be drained.
2. Remove the false bottom in cabinet area.
3. Connect your hose to the hose bib located in the lower compartment. Open the hose bib valve until water starts coming out of the drain hose.
4. Turn evacuation pump power switch ON - located at the top left of the enclosure.
5. The length of time it will take to drain depends on the size of your spa. On average it will take approximately 1 hour.

If you have an Infinity Edge Spa allow it to drain for 30 minutes and then take it off of **hold**. Pump 1 will run on low speed to drain the tank into the main body of the spa.

Let pump 1 run on low speed until the water stops coming out of the jets/waterfall and immediately put the system back into **hold** (refer to step one).

6. Allow spa to finish draining. When fully drained, switch off the evacuation pump and close the hose bib valve.
7. Switch off power to the spa via the main GFCI Breaker.
8. You may have to use a shop vacuum to remove any excess water. Clean the spa before refilling. Refer to your Owner's Manual for proper filling instructions. Once the spa is filled, **prior to adding chemicals**, open the hose bib valve for approx. 15 seconds to allow fresh water to flush the Water-Vac™ System then close the hose bib valve.

IMPORTANT PLEASE READ

Do not leave your spa unattended while draining. After 90 minutes the hold function is disabled and will allow your spa pumps to activate. This could cause damage to your equipment.

OPULENCE SERIES CONTROL PANEL



Please click on the link below or scan the QR code to download the Control Panel user guide.

<https://coastspas.com/downloads/Opulence%20Collection%20Control%20Panel%20Manual.pdf>



OPULENCE SPA SEPECIFICATIONS

Series	Model	Seat	Dims(cm)	Dims(in)	Capacity (l)	Capacity (us gal)	Dry wt (kg)	Dry Wt (lbs)	Wet Weight (kg)	Wet Weight (lbs)
Opulence	Apex Bench Curve	7	234 X 234 X 101.5 (119.5 at back)	92 X 92 X 40 (47 at back)	1552	410	672	1482	2224	4903
Opulence	Apex Bench	7	212 X 212 X 101.5	83.5 X 83.5 X 40	1552	410	672	1482	2224	4903
Opulence	Apex Lounge Curve	6	234 X 234 X 101.5 (119.5 at back)	92 X 92 X 40 (47 at back)	1496	395	672	1482	2168	4780
Opulence	Apex Lounge	6	212 X 212 X 101.5	83.5 X 83.5 X 40	1496	395	672	1482	2168	4780
Opulence	Element Bench Curve	6	212 x 212 x 101.5 (119.5 at back)	83.5 x 83.5 x 40 (47 at back)	1268	335	420	925	1688	3721
Opulence	Element Bench	6	212 x 212 x 101.5	83.5 x 83.5 x 40	1268	335	420	925	1688	3721
Opulence	Element Lounge Curve	5	212 x 212 x 101.5 (119.5 at back)	83.5 x 83.5 x 40 (47 at back)	1210	320	420	925	1630	3594
Opulence	Element Lounge	5	212 x 212 x 101.5	83.5 x 83.5 x 40	1210	320	420	925	1630	3594
Opulence	Duoscape	2	196 X 117 X 101.5	77 X 46 X 40	662	175	225	496	877	1934
Opulence	2Purfikt	3-4	212 X 151 X 101.5	84 X 60 X 40	880	232	285	628	1307	2881

DISCLAIMER: At the time of print, this manual is accurate in its information. Coast Spas reserves all the rights to change/modify any spa designs and/or features without notification. To check on updates or for other information, please visit www.coastspas.com

OPULENCE SPA JET OPERATIONS


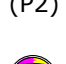

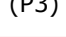
OPULENCE APEX BENCH 65 JETS

	PUMP 1
	PUMP 2
	PUMP 3


JET Note:

Ø	= Cluster Jet
R	= Poly Jet
2K	= Storm Jet
2KV	= Volcano Jet
C.J	= Carousel Jet


Diverter Control

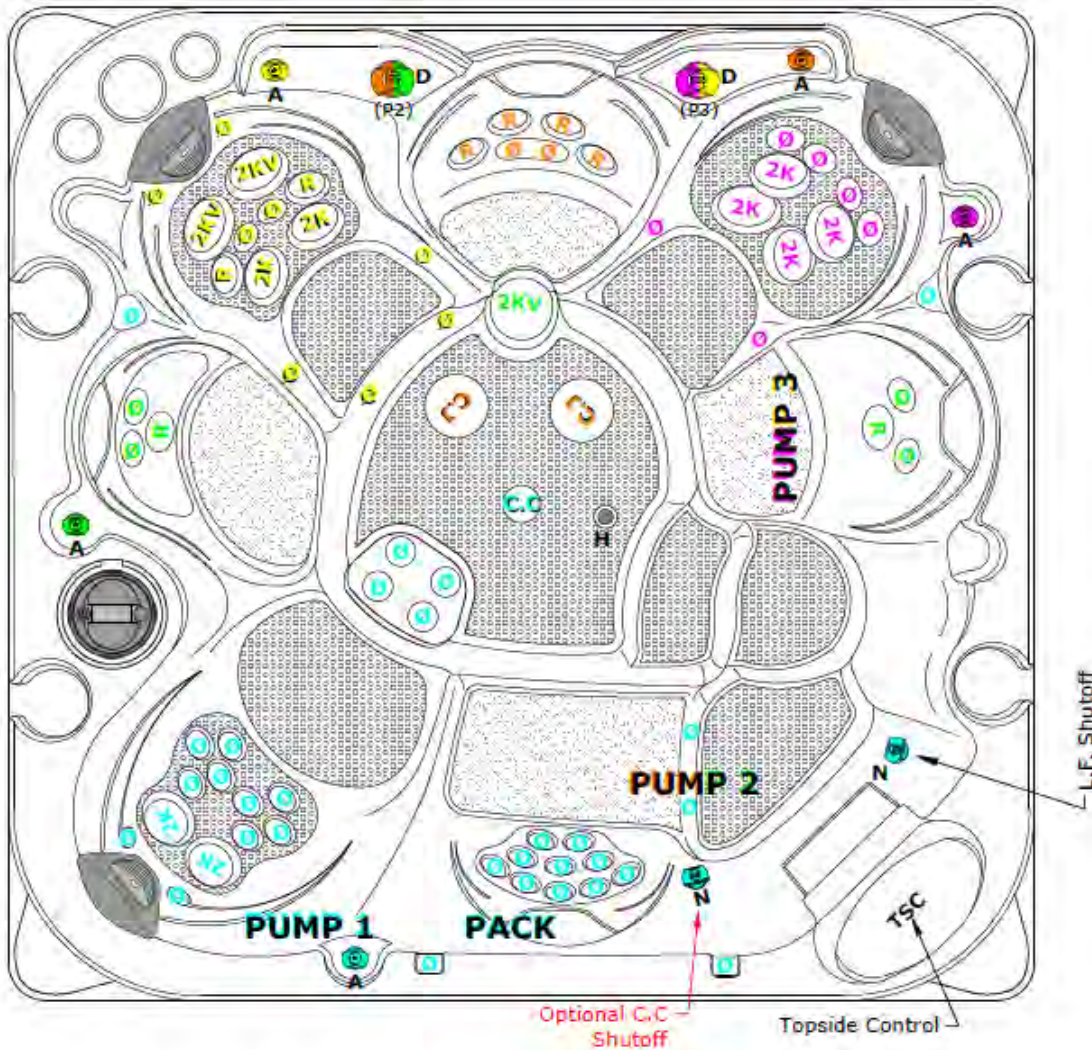
	= Green (Right)
	= Orange (Left)
(P2)	= Both (Center)
	= Yellow (Right)
	= Magenta (Left)
(P3)	= Both (Center)

Air Control General Note:

ON  **OFF**
 (BLUE, ORANGE, GREEN, MAGENTA, YELLOW)

L.F Shutoff & (Optional C.C Shutoff)

ON  **OFF**
 (BLUE)



DISCLAIMER: At the time of print, this manual is accurate in its information. Coast Spas reserves all the rights to change/modify any spa designs and/or features without notification. To check on updates or for other information, please visit www.coastspas.com

OPULENCE SPA JET OPERATIONS




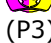
OPULENCE APEX BENCH CURVE 65 JETS

	PUMP 1
	PUMP 2
	PUMP 3


JET Note:

Ø	= Cluster Jet
R	= Poly Jet
2K	= Storm Jet
2KV	= Volcano Jet
C.J	= Carousel Jet


Wall Diverter Control

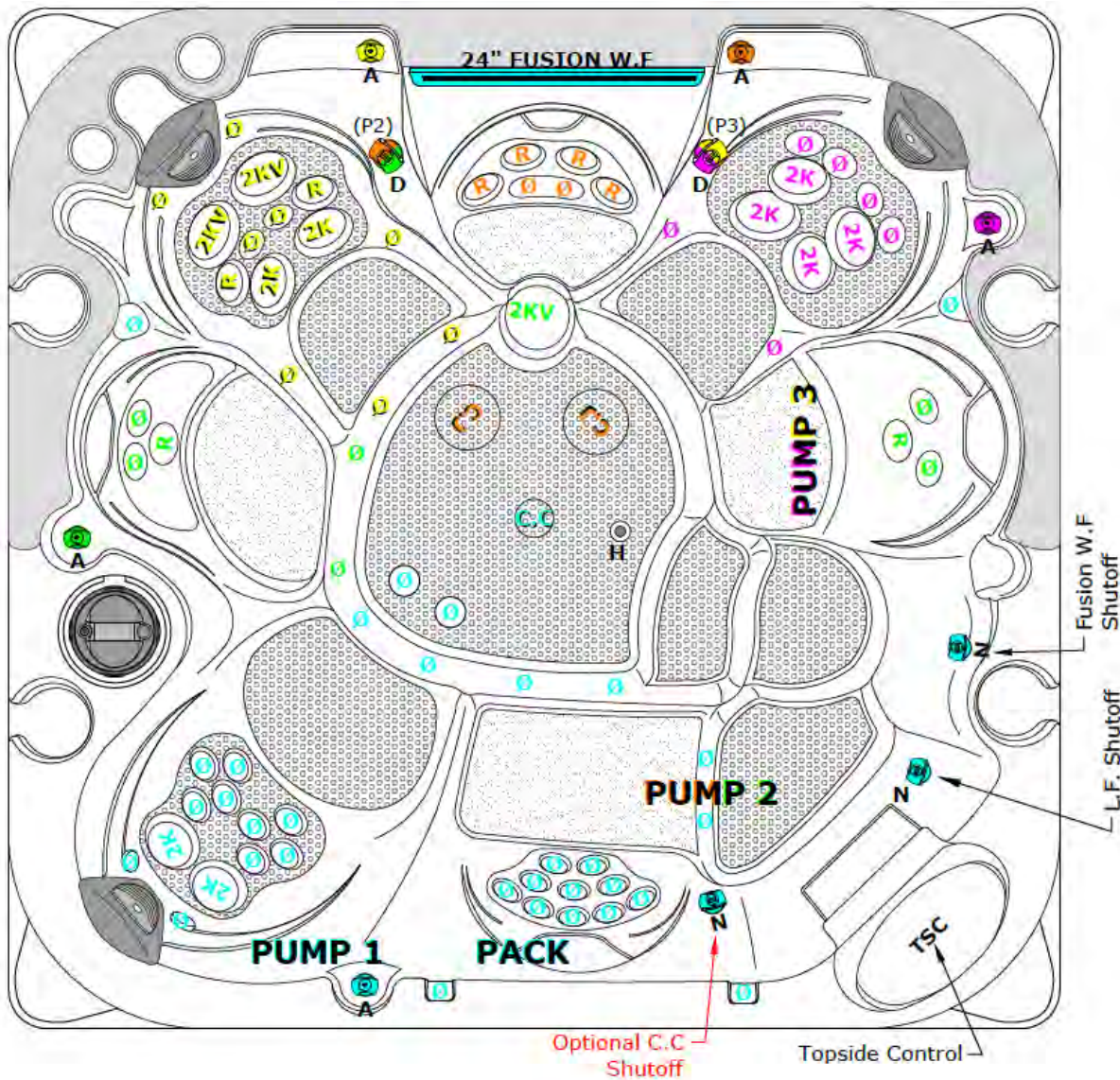
	= Green (Right)
	= Orange (Left)
(P2)	= Both (Center)
	= Yellow (Right)
	= Magenta (Left)
(P3)	= Both (Center)

Air Control General Note:

ON  **OFF**
 (BLUE, ORANGE, GREEN, MAGENTA, YELLOW)

Fusion W.F, L.F Shutoff & (Optional C.C Shutoff)

ON  **OFF**
 (BLUE)



DISCLAIMER: At the time of print, this manual is accurate in its information. Coast Spas reserves all the rights to change/modify any spa designs and/or features without notification. To check on updates or for other information, please visit www.coastspas.com

OPULENCE SPA JET OPERATIONS





OPULENCE APEX LOUNGE 65 JETS

	PUMP 1
	PUMP 2
	PUMP 3


JET Note:

∅	= Cluster Jet
R	= Poly Jet
2K	= Storm Jet
2KV	= Volcano Jet
C.J	= Carousel Jet

Diverter Control

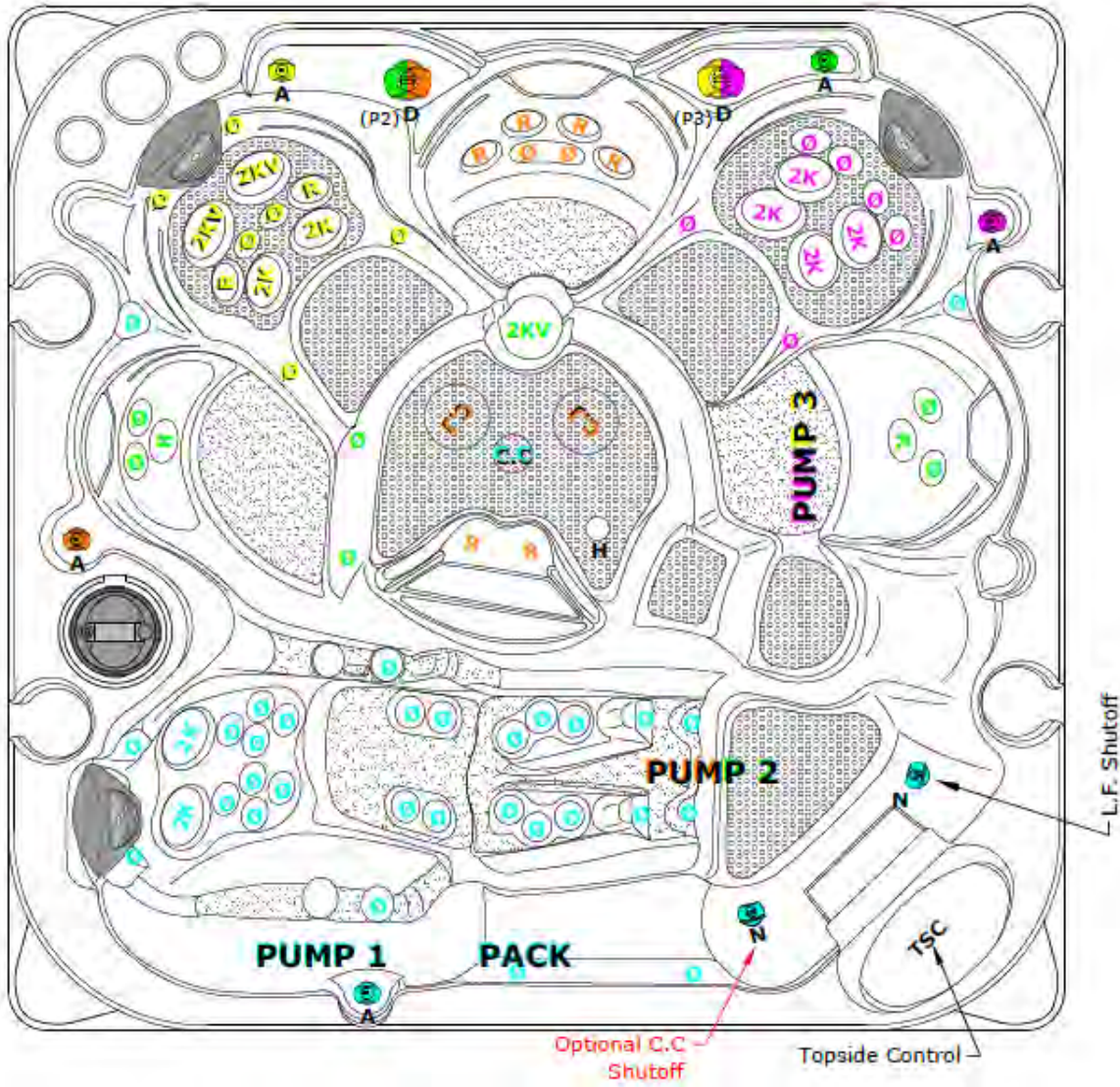
	= Orange (Right)
	= Green (Left)
(P2)	= Both (Center)
	= Magenta (Right)
	= Yellow (Left)
(P3)	= Both (Center)

Air Control General Note:

ON  **OFF**
 (BLUE, ORANGE, GREEN, MAGENTA, YELLOW)

L.F. Shutoff & (Optional C.C Shutoff)

ON  **OFF**
 (BLUE)



DISCLAIMER: At the time of print, this manual is accurate in its information. Coast Spas reserves all the rights to change/modify any spa designs and/or features without notification. To check on updates or for other information, please visit www.coastspas.com

OPULENCE SPA JET OPERATIONS


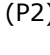

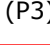
OPULENCE APEX LOUNGE CURVE 65 JETS

	PUMP 1
	PUMP 2
	PUMP 3
	PUMP 3
	PUMP 3


JET Note:

∅	= Cluster Jet
R	= Poly Jet
2K	= Storm Jet
2KV	= Volcano Jet
C.J	= Carousel Jet


Wall Diverter Control

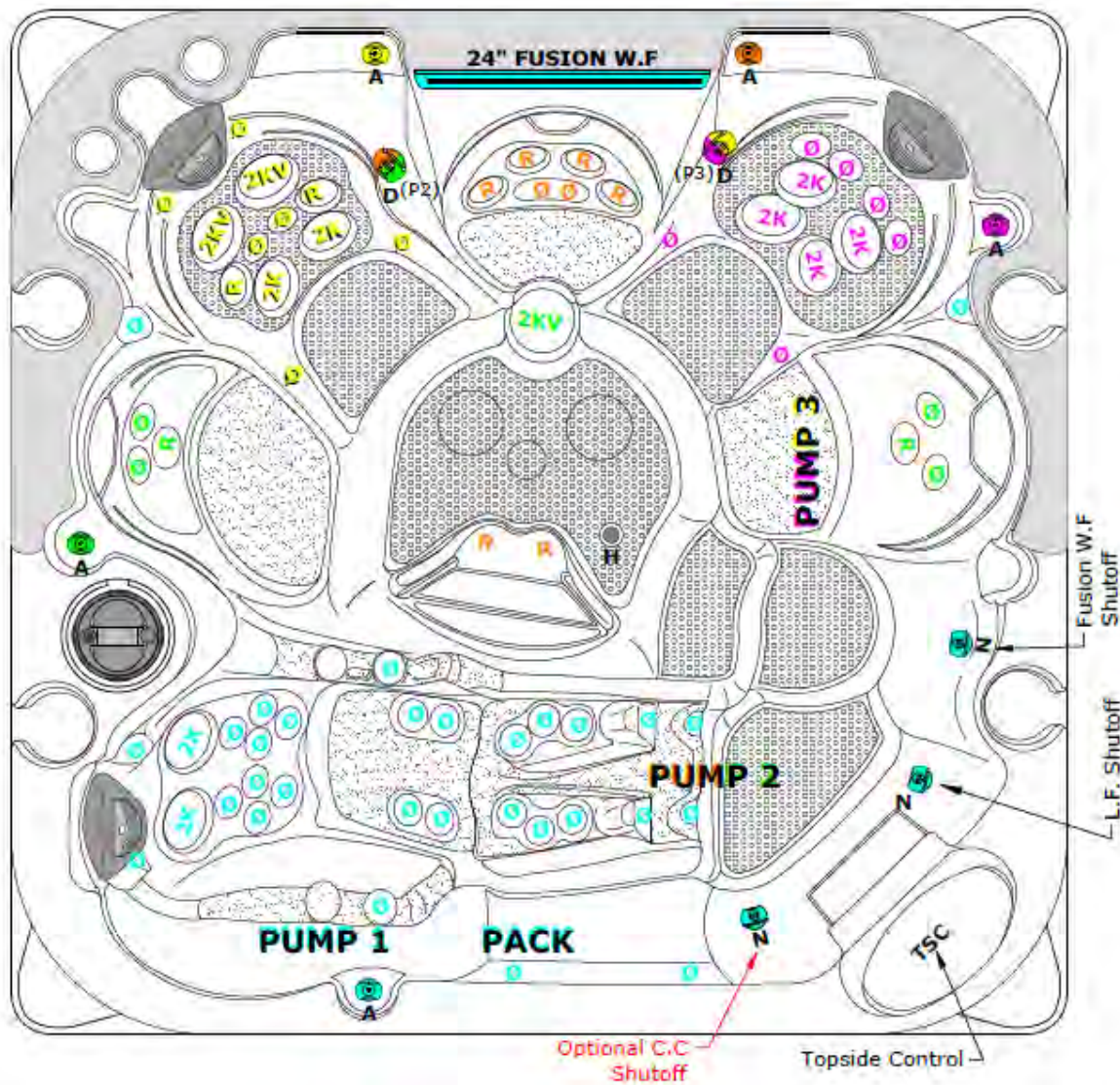
	= Green (Right)
	= Orange (Left)
(P2)	= Both (Center)
	= Yellow (Right)
	= Magenta (Left)
(P3)	= Both (Center)

Air Control General Note:

ON  **OFF**
 (BLUE, ORANGE, GREEN, MAGENTA, YELLOW)

Fusion W.F, L.F Shutoff & (Optional C.C Shutoff)

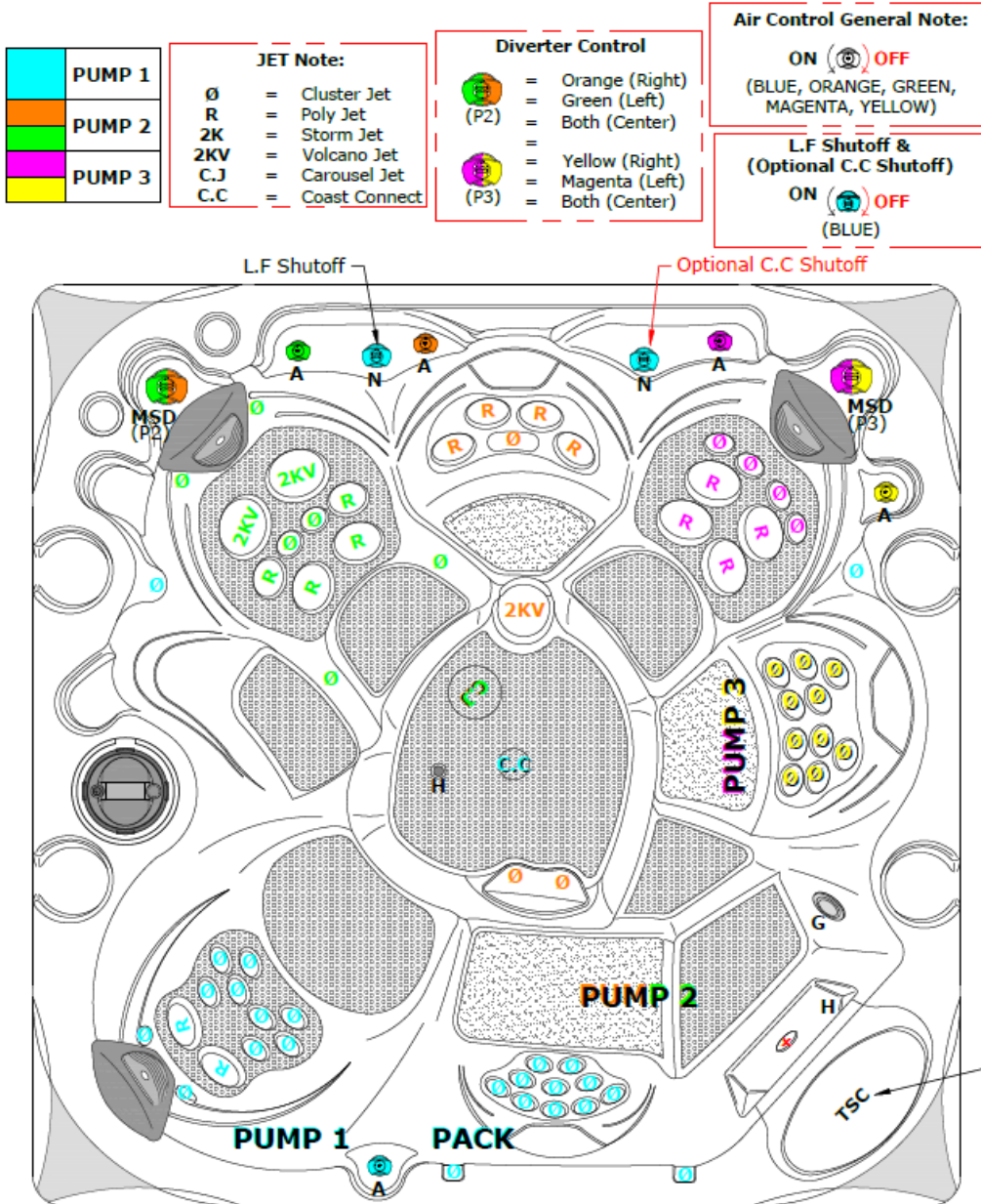
ON  **OFF**
 (BLUE)



DISCLAIMER: At the time of print, this manual is accurate in its information. Coast Spas reserves all the rights to change/modify any spa designs and/or features without notification. To check on updates or for other information, please visit www.coastspas.com

OPULENCE SPA JET OPERATIONS

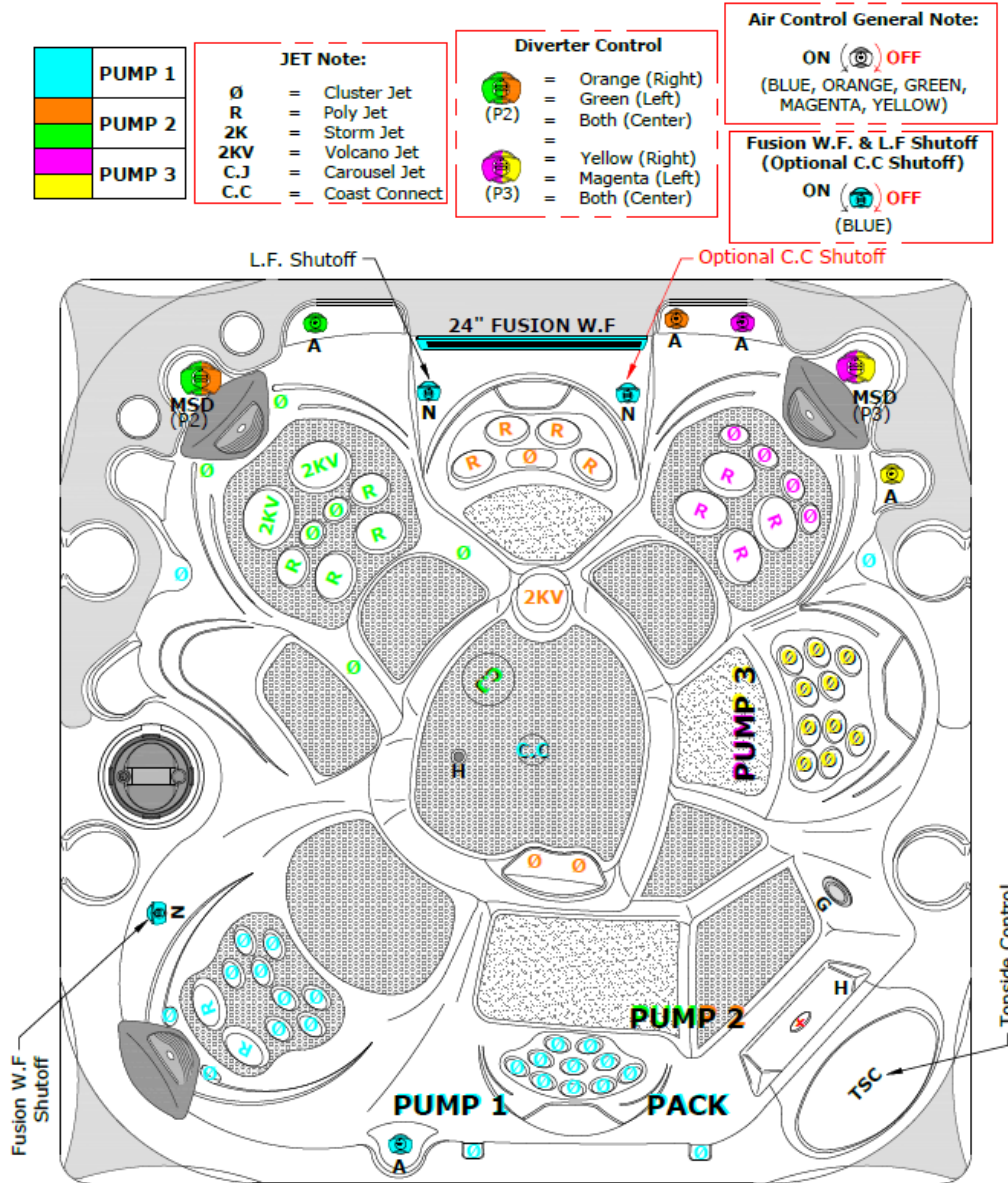
OPULENCE ELEMENT BENCH 60 JETS



DISCLAIMER: At the time of print, this manual is accurate in its information. Coast Spas reserves all the rights to change/modify any spa designs and/or features without notification. To check on updates or for other information, please visit www.coastspas.com

OPULENCE SPA JET OPERATIONS

OPULENCE ELEMENT BENCH CURVE 60 JETS



DISCLAIMER: At the time of print, this manual is accurate in its information. Coast Spas reserves all the rights to change/modify any spa designs and/or features without notification. To check on updates or for other information, please visit www.coastspas.com

OPULENCE SPA JET OPERATIONS



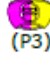

OPULENCE ELEMENT LOUNGE 65 JETS

	PUMP 1
	PUMP 2
	PUMP 3

JET Note:

Ø	= Cluster Jet
R	= Poly Jet
2K	= Storm Jet
2KV	= Volcano Jet
C.J	= Carousel Jet
C.C	= Coast Connect

Diverter Control

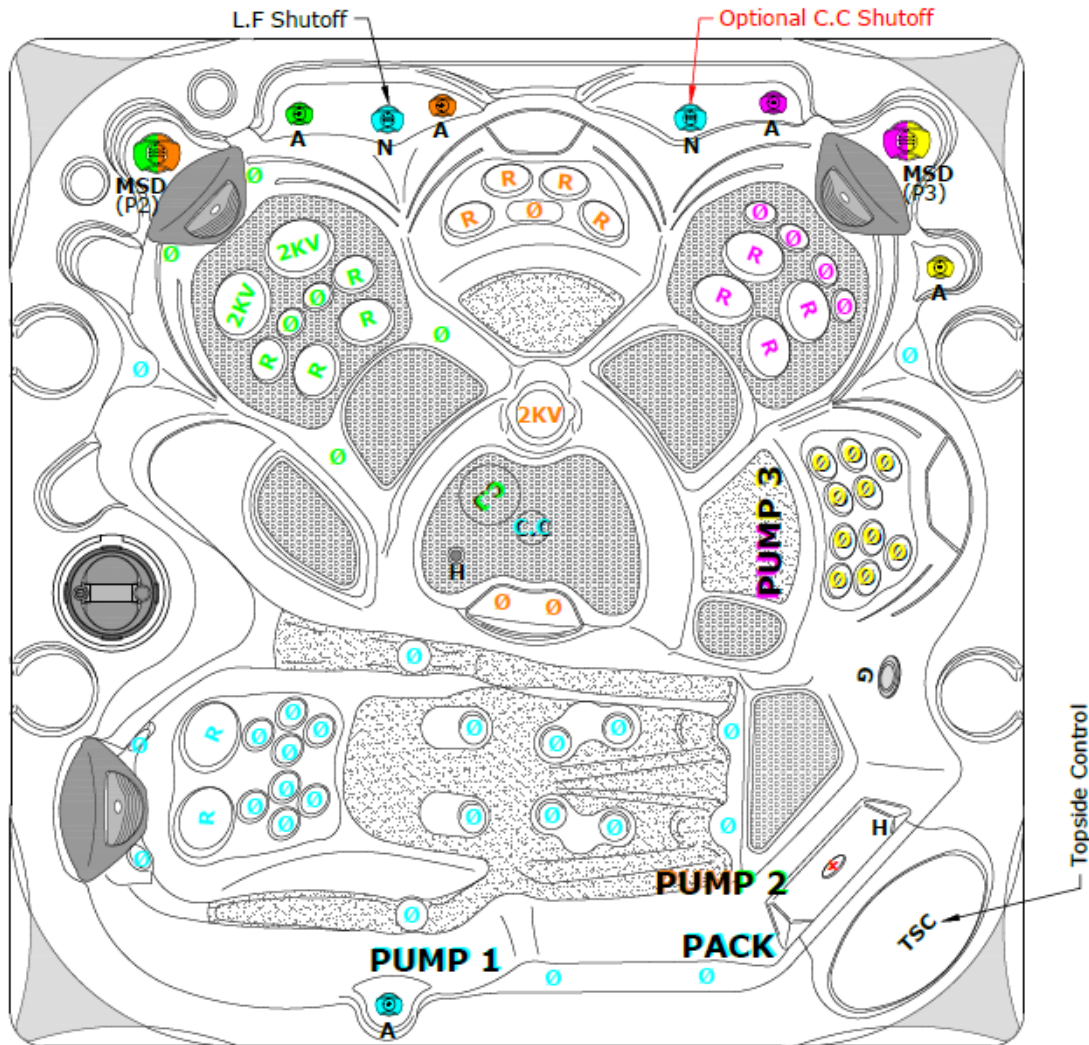
	= Orange (Right)
	= Green (Left)
(P2)	= Both (Center)
	= Yellow (Right)
	= Magenta (Left)
(P3)	= Both (Center)

Air Control General Note:

ON (ON icon) **OFF** (OFF icon)
 (BLUE, ORANGE, GREEN, MAGENTA, YELLOW)

L.F Shutoff & (Optional C.C Shutoff)

ON (ON icon) **OFF** (OFF icon)
 (BLUE)



DISCLAIMER: At the time of print, this manual is accurate in its information. Coast Spas reserves all the rights to change/modify any spa designs and/or features without notification. To check on updates or for other information, please visit www.coastspas.com

OPULENCE SPA JET OPERATIONS

OPULENCE ELEMENT LOUNGE CURVE 65 JETS

	PUMP 1
	PUMP 2
	PUMP 3
	PUMP 3
	PUMP 3

JET Note:

- Ø = Cluster Jet
- R = Poly Jet
- 2K = Storm Jet
- 2KV = Volcano Jet
- C.J = Carousel Jet
- C.C = Coast Connect

Diverter Control

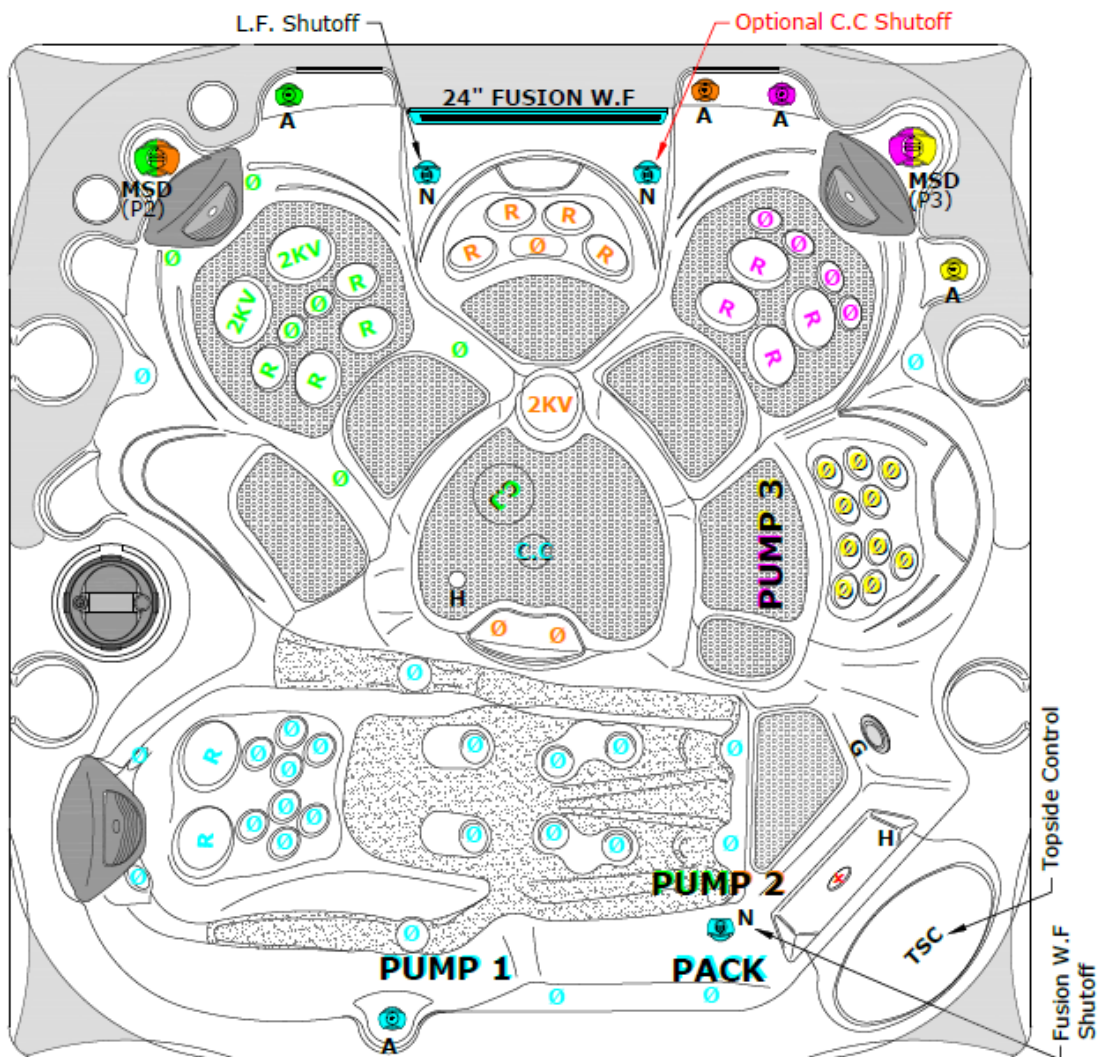
- = Orange (Right)
- = Green (Left)
- (P2) = Both (Center)
- = Yellow (Right)
- = Magenta (Left)
- (P3) = Both (Center)

Air Control General Note:

ON **OFF**
(BLUE, ORANGE, GREEN, MAGENTA, YELLOW)

Fusion W.F. & L.F. Shutoff (Optional C.C Shutoff)

ON **OFF**
(BLUE)



DISCLAIMER: At the time of print, this manual is accurate in its information. Coast Spas reserves all the rights to change/modify any spa designs and/or features without notification. To check on updates or for other information, please visit www.coastspas.com

OPULENCE SPA JET OPERATIONS
OPULENCE DUOSCAPE 32 JETS



OPULENCE SPA JET OPERATIONS

OPULENCE 2PURFIKT JETS

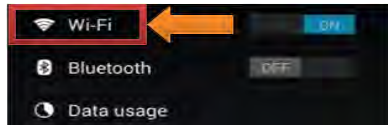


BALBOA WI-FI MODULE

With the Balboa Wi-Fi Module installed in your spa follow the steps below to setup/configure the device.

Step 1: Download the app from the Google Play store or the iTunes store. The app will be titled “Coast Spas—Spa Remote” (Google) or Coast Spas—Remote Spa Control (iTunes).

Step 2: Make sure your Wi-Fi on your device is enabled. Check your device’s instructions on how to access Wi-Fi Settings.



Step 3: While standing at the spa select the Wi-Fi Module from the list of available devices from your device’s Wi-Fi menu. The Wi-Fi device will appear as BWGSpa_XXXXX in the list.



Step 4: Once connected to the Wi-Fi Module directly open the Coast Spas app. The Coast Spas app will allow you to control and interact with the spa while you are still with in range.



Selecting “Controls” will open a list of installed components like pump(s), blower, lights, etc.

Note: This screen will vary depending on installed components.

Selecting “Settings” will open the settings menu. While connected to the spa will be able to set the temperature, change the degrees between °F or °C, alter the heat mode (Ready/Rest), select the temperature range (low or high), set the time of day, input filter cycles (time start and duration) and have access to the advanced menu.

For more information on the various settings please refer to the selection in the owner’s manual for your topside control.

Connecting to the Home Network

Note: You can only connect the Wi-Fi app to the house network when connected directly to the Wi-Fi Module. See “Getting Started” to connect directly to the Wi-Fi Module.

Once connected to the Wi-Fi Module navigate to:

Settings ► Advanced ► Wi-Fi Settings



Step 5: Select your routers security setting. This will vary and if the wrong setting is selected the app will not be able to access the spa.

Step 6: Set your home network. Each router will have its own unique SSID (Service Set Identifier).

Step 7: Enter your key. The key will be the passkey used to sign in on your network.

Note: If you do not know or need assistance locating any of the information above please contact your locale service provider.

CONTROLMYSPA™ (LUXURY MODELS ONLY)

CMS™ SYSTEM CONSISTS OF:



WEBSITE

ControlMySpa™ website with Login and access to spas

CMS™ GATEWAY ULTRA Modules



Home Module



Spa Module

www.balboawater.com/GatewayUltra

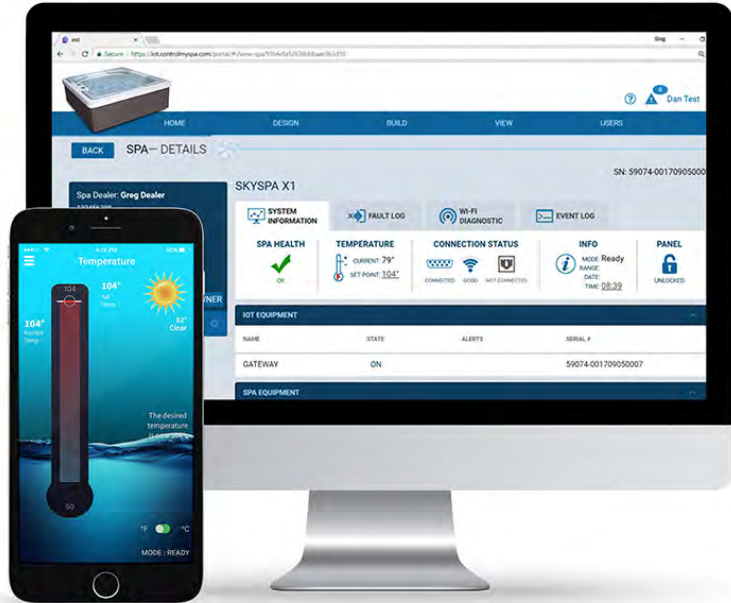
SMARTPHONE | TABLET



iOS (Apple) ControlMySpa™ mobile app and/or Android ControlMySpa™ Mobile app

The ControlMySpa™ system consists of:

- ControlMySpa™ GATEWAY ULTRA installed on a spa/Hot Tub
- iOS (Apple) ControlMySpa™ mobile app or Android ControlMySpa™ mobile app
- ControlMySpa™ website with log-in and access to spas



The ControlMySpa™ Logins:

- The iOS or Android ControlMySpa™ apps can only be accessed with an owner log-in
- The ControlMySpa™ website can be accessed with an owner log-in.

ControlMySpa™ App for the smart device

FOR IPHONE® OR IPAD® (IOS/APPLE)

Search the Apple iOS App Store for “controlmyspa” Or

Use this link: <https://goo.gl/j31t1V>



FOR ANDROID® PHONES/TABLETS

Search Google Play App Store for “controlmyspa”

Or Use this link: <https://goo.gl/CG4Yci>



ControlMySpa™

Connect GATEWAY ULTRA hardware in your home

Step 1

Plug the supplied ethernet cable into the home router (A).

Step 2

Plug the other end of the ethernet cable into the GATEWAY ULTRA module (B).

Step 3

Plug the supplied power cord into the GATEWAY ULTRA module (C).

Step 4

Plug the other end of the supplied power cord into wall power (D).

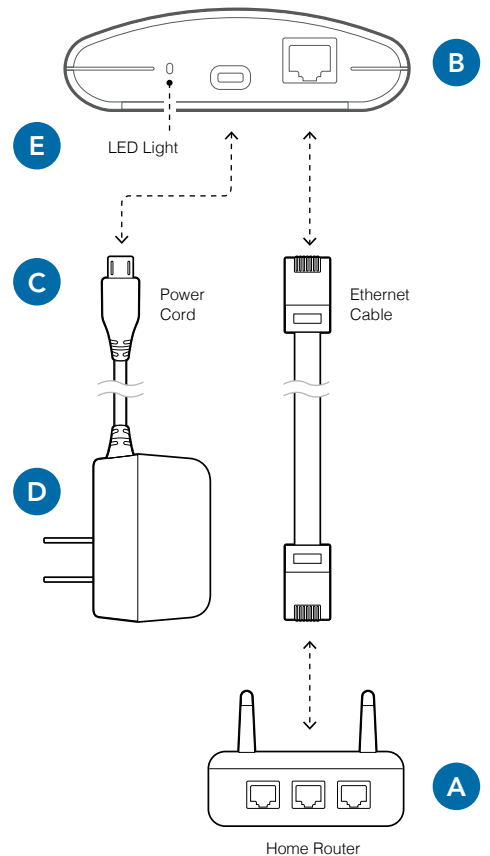


GATEWAY ULTRA Module (side view)

LED Light Chart (E)

This chart applies to the home and spa GATEWAY ULTRA modules.

- Red - Solid: The GATEWAY ULTRA and the spa are not connected.
- Red - Blinking: Home and spa GATEWAY ULTRA modules are connected, but no connection to the spa controller.
- Blue - Blinking: Remote software update is underway. Do not unplug power.
- Green - Blinking: CMS™ GATEWAY ULTRA spa and home modules RF is connected, but no connection to internet.
- Green - Solid: Spa successfully connected to internet. No errors.



CMS™ Code Overview

WHAT IS A CMS™ CODE?

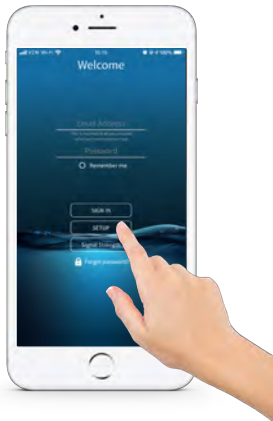
- CMS™ Code is an 8 digit letter/number combination that all Spa owners must have to use spas equipped with the ControlMySpa™ system
- A) The CMS™ code is obtained from your Dealer.
- Spa owners will need this CMS™ code to setup and connect their spas in the ControlMySpa™ database.
- The CMS™ code connects your spa to your OEM and Dealer for service and support

EXAMPLE CMS™ Code: ABC-12345

ABC = 3 letter code unique to each spa Manufacturer or OEM
12345 = 5 number code unique to each spa Dealer or Distributor.

ControlMySpa™

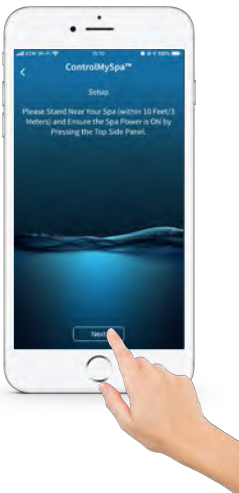
Setup Spa Owner User Account



1. Open the app on your smart device
 Press "SETUP" on the app.



2. Press "Next" Confirm Bluetooth is ON in the iOS Settings.



3. Press "Next"
 Stand near your spa (within 10 feet/3 meters) and ensure the spa power in ON by pressing the topside panel. If the spa is powered ON, press "Next".

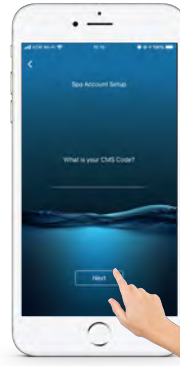


4. Detect Bluetooth



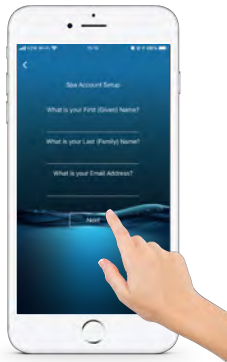
5. Press "Yes"

The serial number in the app should match the serial number on the back of the spa module.



6. Press "Next"

The CMS code is provided by your Dealer. Press "Next".



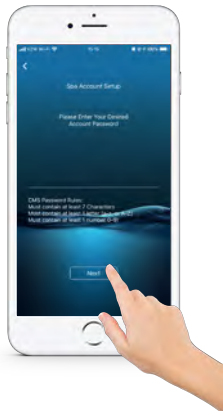
7. Press "Next"

Input information and press "Next".



8. Press "Next"

Input information and press "Next".



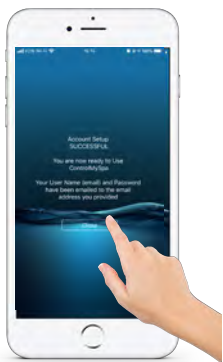
9. Press "Next"

Input information and press "Next".



10. Press "Next"

Your UserID and password will appear. Press "Next".



11. Press "Close"



12. Press "SIGN IN"

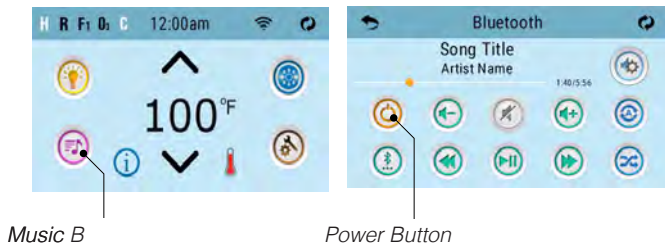
Input your email address, password and press "SIGN IN".

SUCCESS! YOUR ACCOUNT IS SETUP, AND YOU CAN CONTROL YOUR SPA WITH THE CMS APP.

BALBOA BLUETOOTH AUDIO



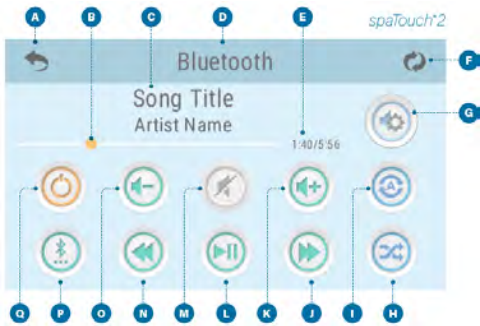
bba™3 Amplifier



Music B

Power Button

Bluetooth Screen



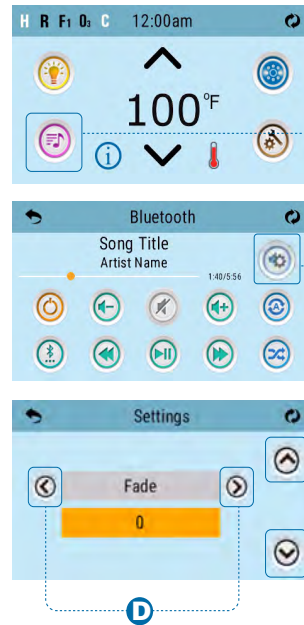
- A - Back
- B - Progress Bar
- C - Song Title, Artist
- D - Screen Title: Bluetooth
- E - Song Progress
- F - Invert Display
- G - Settings
- H - Shuffle
- I - Repeat: one song or all songs
- J - Track Forward
- K - Volume Up
- L - Play/Pause
- M - Mute
- N - Track Back
- O - Volume Down
- P - Input Modes: Bluetooth, Line in
- Q - Power

Pairing Smart Device

- Power up the system pack with bba2 already connected to the system pack.
- On the control panel press the music button. Next, press the power button.
- Turn on Bluetooth function of your smart device or music device.
- On your smart device or music device, click search for Bluetooth device. Make sure you are close enough to the spa tub.
- On your smart device, select “BBA Spa Music” from the pairing list. If “BBA Spa Music” does not appear, repeat steps previous steps.
- Some smart devices will connect automatically and others you will need to select “Connect.” Once connected, this icon will appear. Play music on your smart device. If the music plays from the speakers in the spa, the connection is complete.

NOTE: bba3 operates up to 100 feet in open air. Ranges vary as they are dependent on installations.

Adjust Settings

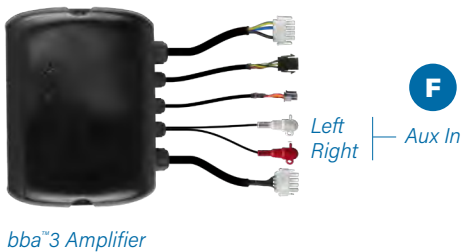
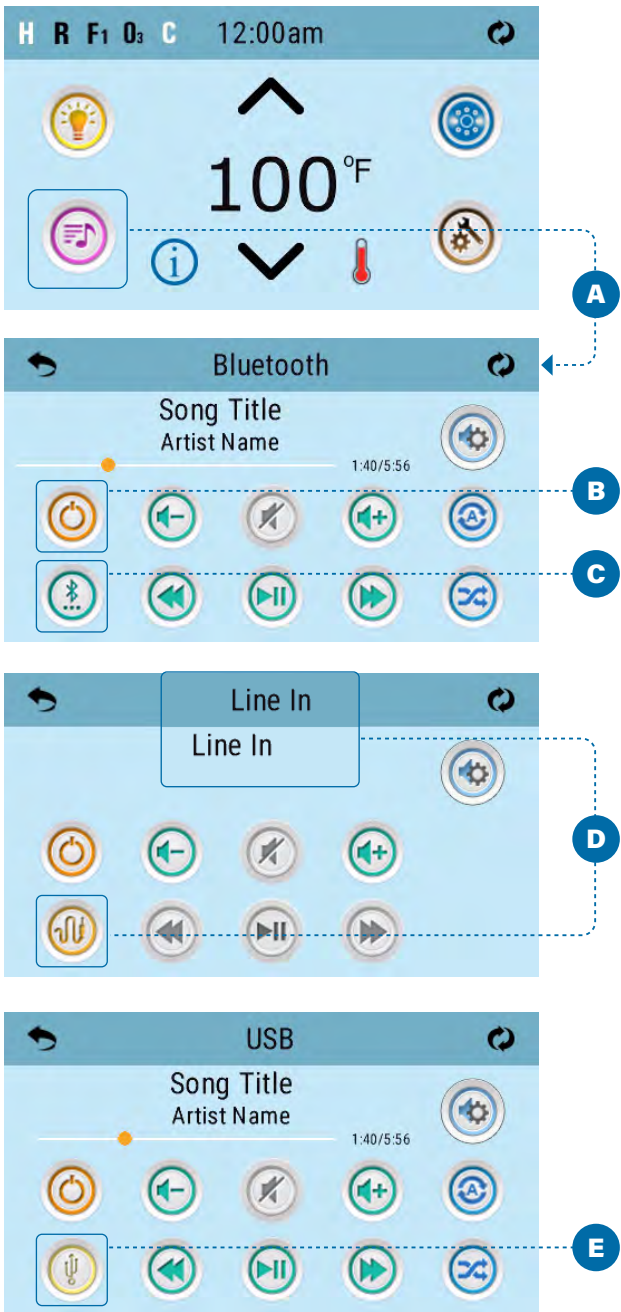


1. Follow these steps to adjust the audio settings. Press the Music button (A) to enter the Bluetooth screen.
2. Press the Settings button (B) to enter the Settings screen.
3. Press these buttons (D) to select an audio setting. The audio settings are listed below.
4. Press these buttons (C) to change the setting's value.

SETTINGS

- Balance
- Fade
- EQ Preset
- Filter
- Bass Gain

There are two types of filters: Low Pass and High Pass. These filters apply to the rear speaker output only. Select Low Pass for subwoofers or High Pass for tweeters. Select OFF if filtering is not desired. Normal speakers do not require filtering.



SELECT INPUT MODE

The following input modes are available: Bluetooth, Line In. All control systems are equipped with Bluetooth mode. However, control systems may or may not have Line In, as this input mode is optional.

Follow these steps to select the input mode of the bba™3 amplifier.

1. Press the Music button (A) to enter the Bluetooth screen.
2. Confirm that the bba™3 amplifier is turned On. If it is turned Off, the button icon (B) will be gray.
3. Press the Input button (C) to select one of the following input modes:

Bluetooth (C).

Line In (D)

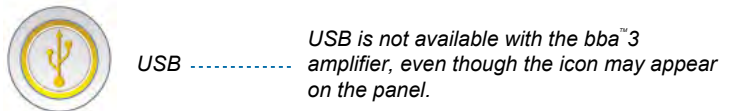
USB (E) - USB is not available with the bba™3 amplifier, even though the icon may appear on the panel.

Line In mode (D) allows you to connect any headphone output to the Aux In connectors (F), but you will likely need an adapter cable because of the different connectors.

Only audio settings such as Volume are available when using Aux In (F).

The terms “Line In” (D) and “Aux In” (F) refer to the same thing.

INPUT MODE ICONS

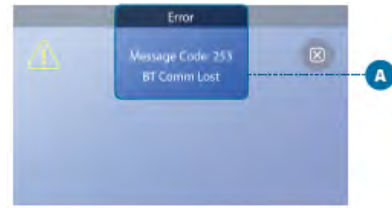


TROUBLESHOOTING

Scenario 01

Problem: The error message “BT Comm Lost” (A) appears on the panel display.

Solution: The control system has lost communication with the bba™3 amplifier (B). Contact customer support for help.



Scenario 02

Problem: When you try to connect your music device to Aux In on the bba™ amplifier, the Aux In connectors on your bba™ amplifier are different than these (C).

Solution: Your spa is equipped with an earlier version of bba™ (1 or 2). Contact customer support for help.



Scenario 03

Problem: Song title appears only sometimes or never.

Solution 1: A few music player apps never send song title and other info over Bluetooth, so try another app. Also, some music player apps don't send song title if playing automatically in the background, only if the app is “visibly running” on the device, so try “opening” the app which is playing in the background.

Solution 2: If the song title never appears, this can happen for a couple of other reasons. One, you may have an older bba™ amplifier. Two, you may have an older panel. Contact customer support for help.



Scenario 04

Problem: When you press the music button (A) or select A/V, it does not go to the Bluetooth screen.

Solution: If the screen it takes you to has a Bluetooth button (B), select that Bluetooth button to continue.

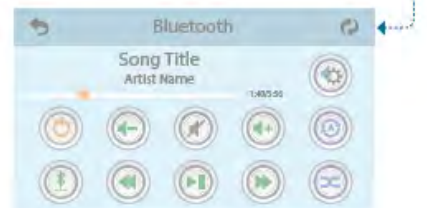
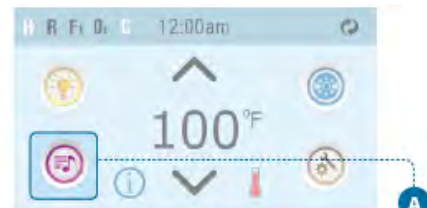
That Bluetooth button (B) may not appear if the control system (E) did not detect the bba™3 amplifier (D).

NOTE: This can appear on multiple panels. The spaTouch™2 screens on this page are used to illustrate the scenario.

Scenario 05

Problem: The Shuffle and Repeat buttons do not work on my panel.

Reason: Some music players/devices do not support Shuffle and/or Repeat.

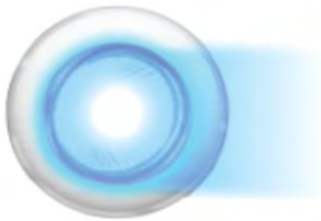


COAST STATUS



Coast Status is designed to give real time status of the spa. LED's will be tied to a cabinet mounted light fitting that the spa owner can use to tell, at a glance, if all is OK with the spa or if something requires their attention. Coast Status Warning messages shown below.

Coast Status Lighting Legends



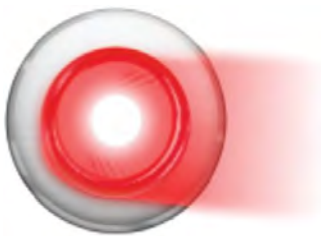
Steady Blue Light

Spa pack is operational. There are no messages, faults or error codes.



Flashing Blue Light

Spa pack is operational. There is a reminder and/or message. There is no fault. *Example: Message code 40 - this code requests you to set the time.*




Steady Red Light

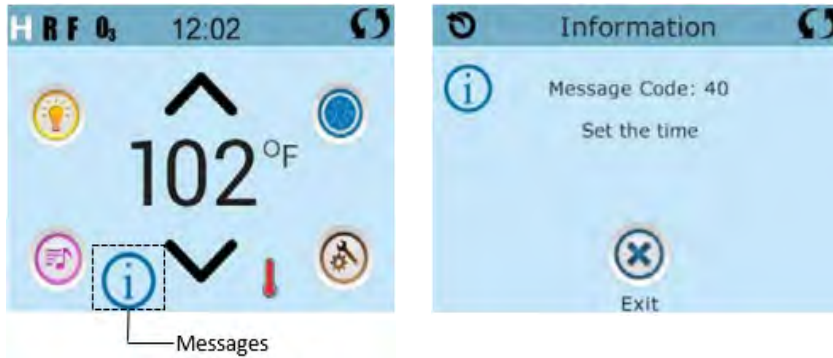
There are warning messages or faults present.



Flashing Red Light

Severe warnings or faults present.

To check message on the Control Panel screen, tap on  icon.



COAST STATUS MESSAGES

Message #	Message Text	Message #	Message Text	Message #	Message Text
0	<none>	20	The clock has failed	36	The GFCI test failed
1	Possible freezing condition	21	The settings have been reset	37	Hold (aka Standby) Mode
2	Test the GFCI	22	Program memory failure	38	Run Jets 1 to get temperature
3	Change the filter	23	Configuration error (Call for service)	39	Test software installed
4	Clean the filter	24	Darin Mode	40	Set the time
5	Treat the wood	25	Demo Mode	43	Change UV
6	Clean the cover	26	Sensors are out of sync (Call for service)	44	J29
7	Change the mineral cartridge	27	The heater is dry	45	The water level is too low
8	Change the water	28	The heater may be dry	47	Check Ozone
9	Check the sanitizer	29	The water is too hot	48	Service Check-Up
10	Check the pH	30	The heater is too hot	49	Check the filter now
15	Sensors are out of sync	31	Sensor A fault (Call for service)	248	Chromazon Fault: Too Many Lights
16	The water flow is low	32	Sensor B fault (Call for service)	250	Chromazon Fault: Not Responding
17	The water flow has failed	34	A pump may be stuck on	253*	BT Failure
19	Priming Mode	35	Hot fault (Call for service)	254*	Communications error (Call for service)

COAST SPAS CARE SALTWATER SYSTEM

INTRODUCTION

Coast Spas Care Saltwater System produces a pure form of chlorine by electrolysis of salt (NaCl) in order to sanitize your spa water. After the salt is converted to chlorine and the bacteria are killed, the chlorine converts back to salt and this process is ongoing. The salt concentration used is very low (less than that in a human tear). Chlorine output can be easily adjusted by the timer on the power supply unit. The chlorine level in your spa can be checked by using a standard chlorine test kit. One unit can treat up to 2,200L (600 gallons) of spa water (or up to 5700 L (1500 gallons) Swim Spa water).

WARNING: Risk of Electric Shock. Connect only to a grounding type receptacle protected by a GFCI. Contact a qualified electrician if you cannot verify that the receptacle is protected by a GFCI.

WARNING: Make sure the power supply is unplugged from the wall outlet when using spa.

WARNING: To reduce the risk of injury or electric shock, do not allow children to use this product.

WARNING: Power supply should be installed in a shaded area to protect the transformer from direct sunlight.

WARNING: Disconnect the power supply from the outlet when not in use.

WARNING: Do not operate with a damaged cord or power supply.

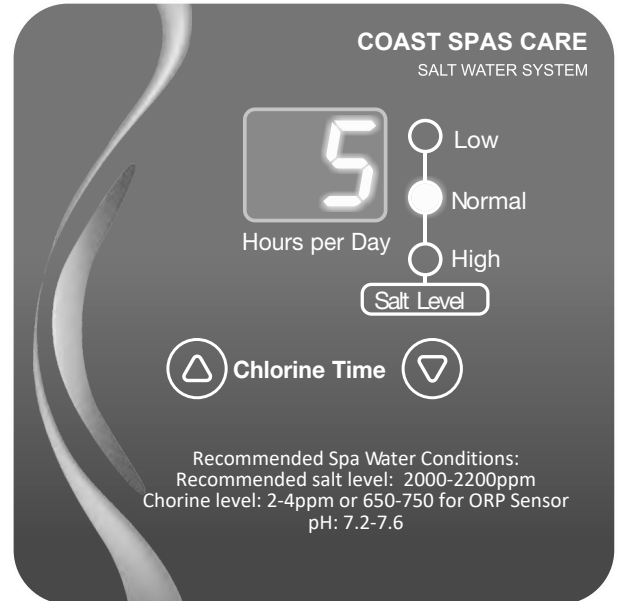
WARNING: To avoid risk of electrical shock, do not put the power supply in the water.

WARNING: To reduce the risk of electric shock, do not use extension cords to connect unit to electric supply; if necessary, contact a qualified electrician to provide a properly located outlet.

WARNING: Make sure the power supply is unplugged from the wall outlet when cleaning/servicing the cell assembly.

This appliance is not intended for use by persons (including children) with reduced physical, sensory or mental capabilities, or lack of experience and knowledge, unless they have been given supervision or instruction concerning use of the appliance by a person responsible for their safety.

Children should be supervised to ensure that they do not play with the appliance. If the supply cord is damaged, it must be replaced by the manufacturer, its service agent or similarly qualified persons in order to avoid a hazard.



SPECIFICATIONS:

Power Supply:

Size: For Spas or Swim Spas up to 5700L (1500 gallons)

INPUT:

120VAC, 50/60HZ, 0.33AMP 230VAC, 50/60HZ, 0.17AMP

OUTPUT:

5.0 VDC, 2.0Amp (40°C / 104°F)

Cell:

Normal output equivalent to 32 grams (1.1 oz) of free available chlorine per day.

Reverse Polarity Function:

The Reverse Polarity Function is designed to automatically clean the cell plates, maximizing the cell's ability to manufacture chlorine.

WARNING: To reduce the risk of injury, do not permit children to operate the device.

WARNING: Heavy spa usage, and higher temperatures may require higher chlorine output to maintain proper free available chlorine residuals.

If additional chlorine is required due to heavy bather loads, use liquid chlorine to maintain an appropriate chlorine residual in the water.

DO NOT add spa chemicals directly to the skimmer. This may damage the cell.

Maintaining high salt and chlorine levels above recommended range can contribute to corrosion of spa equipment. Check the expiry date of the test kit as test results may be inaccurate if used after that date.

The life expectancy of the electrode is 7,000 hours under normal use conditions.

For proper sanitation, spas should be completely drained periodically. The number of days between COMPLETE SPA DRAINAGE is equal to the volume of spa water in litres, divided by 10 times the maximum number of daily spa users. Refill spa with water and repeat DIRECTIONS FOR USE of the device.

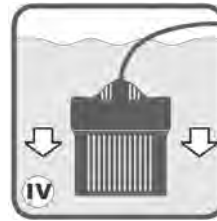
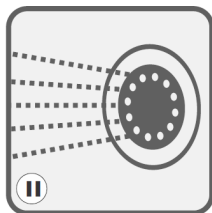
Health and Hyperthermia warnings for spa devices:

People with a medical condition should consult a physician before entering pool or spa water.

Maximum spa water usage temperature is 40°C. Bathing in spa water at 40°C should not exceed 15 minutes.

COAST SPAS CARE SALTWATER SYSTEM OPERATION

- I. Turn on the power to the spa equipment.
- II. Turn on main spa pump.
- III. Add required type and amount of salt to spa. Spread over the surface and allow salt to dissolve for at least 20 minutes.
- IV. Place the cell in the spa (anywhere below the waterline, preferably one foot under).
- V. Plug the Power Supply into an 110VAC/220 VAC GFCI protected outlet.

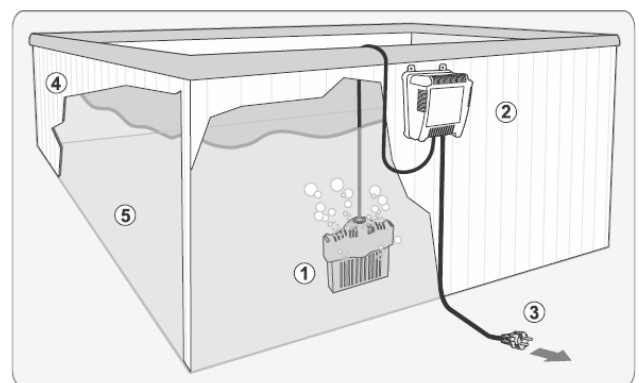


NOTE: The spa chemistry must be balanced before installing the system to the spa. During startup, add chlorine between 2-4 ppm as a base amount. Be sure to test the chlorine level for the next few days and properly adjust the chlorine output by adjusting the Hours Per Day on the power supply front panel.

DO NOT EXCEED RECOMMENDED CHLORINE LEVELS! Make the required adjustment and allow the spa to react to this change for a minimum of 2 days.

After 2 days, retest the spa water and make any further adjustments as required, until the unit maintains an adequate Free Available Chlorine residual.

NOTE: The Coast Spas Care Saltwater System works based on a natural convection of water, not a forced convection as in in-line systems. This operation is independent of the main circulation pump. The cell must be submerged underwater for proper operation. As the cell is energized to generate chlorine, bubbles will appear and is normal. If the cell is removed from spa water, chlorine generation is automatically stopped.



1. Chlorinator Cell
 2. Power Supply
 3. Plug
 4. SPA
 5. Water*
- *for salt levels see the "SPA Chemistry Chart"*

POWER SUPPLY FUNCTION

When the Power Supply is first plugged in:

All three LED lights and the display will be ON for approximately 3 seconds while the Coast Spas Care Saltwater System unit self-tests.

Normal Operation:

If your Coast Spas Care Saltwater System unit is operating properly, the Green LED light will display solid GREEN and the display will show the operation hours per day. This indicates that power is being delivered from the Coast Spas Care Saltwater System to the cell and is producing sanitizer and your spa is being sanitized by Hypochlorous Acid (chlorine). **NOTE:** While sanitizer is being produced, bubbles can be seen coming from the cell!

Abnormal Conditions:


The LED lights will flash rapidly and/or the display will also flash to indicate a problem or failure. For further explanation of the abnormal conditions, please refer to the Troubleshooting Guide.

Chlorine Output Control

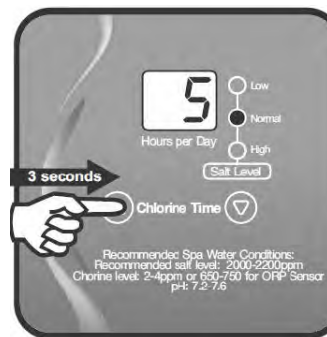
The chlorine output is controlled by the adjustment of the Timer of the power supply. The Timer regulates the hours per day of the amount of "ON" time the system requires to maintain the chlorine residuals as required. The output is only regulated according to the chlorine timer. It operates independently from your filter pump run time.

NOTE: Any interruption of power will cause the current memory cycle to reset itself when power is restored.

CHLORINE ADJUSTMENT

After everything is setup, the display will show you a default screen with the current hours of operation per day. You may change this setting anytime by holding down the  for 3 seconds straight. The display will flash indicating it is now ready for time setting changes. In order to determine the proper chlorine timer setting for your spa, measure the free chlorine level every day. Adjust the timer accordingly to achieve 3.0-5.0 PPM of Free Chlorine. It is advised to check the chlorine level at least daily to make sure the spa is properly sanitized. Weather, bather load, and sunlight have a major influence on the chlorine demand of the spa water.

Note: If the spa has reached an undesirable amount of chlorine, it is recommended to unplug the Coast Spas Care Saltwater System power supply from the GFCI socket. Check chlorine levels each day until the desired level is achieved. Plug the power supply back into the GFCI socket once the chlorine level is within the desired limit.



SALT REQUIREMENTS

The best salt is a food-quality granulated salt, a 99.9% pure salt or solar salt. These types of salt should be purchased from a pool store and are designed for use with chlorine generators.

Do not use rock salt, iodized salt or salt with anti-caking additives. Do not use salt with more than 1% yellow prussiate of soda.

The optimum salt level is between 2000-2500 ppm. Use the chart below to determine the amount of salt for your spa. The column on the left is the amount of water in your spa. The column on the top is the current salt level measured in your spa. Always check your salt level before adding salt to the spa even if this is your first time.

Prior use of liquid chlorine and tablets could have caused an increase in salt levels. Salt should not be removed from the spa water unless the salinity exceeds 4000 ppm or the salinity of the water is undesirable. The only way to remove salt is by draining the water and adding fresh water.

NOTE: Turn the Coast Spas Care Saltwater System unit off before adding sodium chloride and other chemicals, and wait until complete dissolution before turning it on.

Salt Table I: Amount of salt needed to achieve 2500 ppm level in your spa.

Spa Size in Gallons/ (Liters)	Salinity (ppm) measured in SPA						
	0	500	1000	1500	2000	2500	3000
378 Litres (100 Gallons)	1.0 kg (2.1 lbs)	0.8 kg (1.7 lbs)	0.6 kg (1.3 lbs)	0.4 kg (0.8 lbs)	0.2 kg (0.4 lbs)	0	0
757 Litres (200 Gallons)	1.9 kg (4.2 lbs)	1.6 kg (3.4 lbs)	1.2 kg (2.6 lbs)	0.8 kg (1.6 lbs)	0.4 kg (0.8 lbs)	0	0
1135 Litres (300 Gallons)	2.8 kg (6.3 lbs)	2.3 kg (5.0 lbs)	1.7 kg (3.8 lbs)	1.1 kg (2.5 lbs)	0.6 kg (1.3 lbs)	0	0
1514 Litres (400 Gallons)	3.8 kg (8.4 lbs)	3.0 kg (6.7 lbs)	2.3 kg (5.0 lbs)	1.5 kg (3.3 lbs)	0.8 kg (1.7 lbs)	0	0
1892 Litres (500 Gallons)	4.7 kg (10.4 lbs)	3.8 kg (8.4 lbs)	2.8 kg (6.3 lbs)	1.9 kg (4.2 lbs)	0.9 kg (2.1 lbs)	0	0
2271 Litres (600 Gallons)	5.7 kg (12.5 lbs)	4.5 kg (10.0 lbs)	3.4 kg (7.5 lbs)	2.3 kg (5.0 lbs)	1.1 kg (2.5 lbs)	0	0

Salt Table II: Amount of salt needed to achieve 3000 ppm level in your Swim SPA.

Swim Spa Size in Gallons/ (Liters)	Salinity (ppm) measured in Swim SPA						
	0	500	1000	1500	2000	2500	3000
3780 Litres (1000 Gallons)	11.3 kg (25 lbs)	9.5 kg (21 lbs)	7.6 kg (17 lbs)	5.7 kg (13 lbs)	3.8 kg (8 lbs)	1.9 kg (4 lbs)	0

STABILIZER (CYANURIC ACID) LEVELS

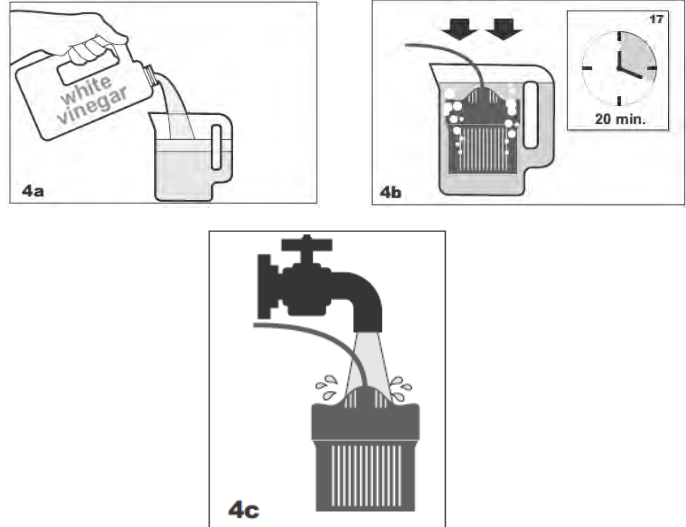
Cyanuric Acid/Stabilizer/Conditioner (Required with uncovered outdoor spas only) Cyanuric acid, CYA, (also known as stabilizer or conditioner) prevents rapid breakdown of chlorine by direct sunlight. Maintain CYA concentrations between 50-80 ppm by diluting with fresh water. Regulations may exist regarding use of Cyanuric acid in spas; please consult with your spa professional. Use the following chart to determine the amount of Cyanuric acid needed. Test water with a test kit that includes CYA testing, then use the table below to determine the amount to add.

Spa Size in Liters (Gallons)	CYA (ppm) Level Before Addition						
	0	15	30	45	60	75	80
378 Litres (100 Gallons)	28 g (1.0 oz)	23 g (0.8 oz)	17 g (0.6 oz)	11 g (0.4 oz)	6 g (0.2 oz)	0	0
757 Litres (200 Gallons)	57 g (2.0 oz)	45 g (1.6 oz)	34 g (1.2 oz)	23 g (0.8 oz)	11 g (0.4 oz)	0	0
1135 Litres (300 Gallons)	85 g (3.0 oz)	68 g (2.4 oz)	51 g (1.8 oz)	34 g (1.2 oz)	17 g (0.6 oz)	0	0
1514 Litres (400 Gallons)	113 g (4.0 oz)	91 g (3.2 oz)	68 g (2.4 oz)	45 g (1.6 oz)	23 g (0.8 oz)	0	0
1892 Litres (500 Gallons)	142 g (5.0 oz)	113 g (4.0 oz)	85 g (3.0 oz)	57 g (2.0 oz)	28 g (1.0 oz)	0	0
2271 Litres (600 Gallons)	170 g (6.0 oz)	136 g (4.8 oz)	102 g (3.6 oz)	68 g (2.4 oz)	34 g (1.2 oz)	0	0
Swim Spa Size: 3780 Liters (1000 Gallons)	280 g (10 oz)	230 g (8 oz)	170 g (6 oz)	110 g (4 oz)	60 g (2 oz)	0	0

UNIT MAINTENANCE

Inspecting the Cell: The cell should be inspected every 3 months. Unplug the Coast Spas Care Saltwater System from the GFCI socket. Inspect the cell for scaling (white, sugar-like) deposit. If scaling exists, the cell should be cleaned.

Cleaning the cell: To clean the cell, make sure the power supply is not plugged into the socket. A large cup should be used. Fill the cup with enough white vinegar to submerge the entire cell. Place the entire cell into the cup for 20 minutes. Remove the cell and make sure all scaling is gone. If the scaling remains, repeat the process. After the scale is removed, rinse the cell with fresh water.



Coast Spas Care Saltwater System Operation Mode and Trouble Shooting

Symptom on Power Supply		Possible Causes	Solution
Display	LED		
1	no display	1 - power outage 2 - fuse burnt 3 - power supply failure	Make sure there is power to the unit. Check and change the fuse if it's burnt. Call customer service.
2	"_ _"	MINI in rest mode	No action is needed. If you want it to operate immediately, unplug/plug the power or adjust the timer. Both will start the operation right away.
3	"_ _" and Hours (05 by default) alternating	1 - chlorinator cell is outside water 2 - open circuit in chlorinator cell 3 - salt level low	Put it back into the water. Check the wire connections and make sure no cut or broken wire. Add more salt to spa and allow time for it to dissolve.
4	"LO" and Hours (05 by default) alternating	1 - salt level low 2 - water temperature low 3 - chlorinator cell at its life end	Add more salt to spa and allow time for it to dissolve. Don't use unit if the water temperature is under 15° C (65° F). Call customer service for replacement.
5	Hours (05 by default)	normal operation mode	No action is needed.
6	"HI" and Hours (05 by default) alternating	1 - salt level high 2 - water temperature high	No action is needed. Stop adding salt to water if you are doing so. Using unit for water temperature above 45° C (110° F) is not recommended.
7	"HI"	1 - salt level too high 2 - water temperature too high 3 - short circuit in chlorinator cell	You will have to dilute your spa water with fresh water until the salt level is less than 3000 ppm. Stop using unit until water cools down. Check to make sure there are no metal objects caught in between electrode plates.
8	"8 8" blinking	Power supply failure	Unplug and plug in the power cord to reset the power supply. If the problem persists, call customer service.
Symptom in Spa Water			
9	chlorine level is low	Hours set too low	Adjust the hours setting to higher number (the maximum is 24 hours/day).
10	chlorine level is too high	Hours set too high	Make sure cyanic acid level in your spa is between 50-80 PPM. Adjust the hours setting to lower number (the minimum is 0 hours/day).



WORLD'S BEST BUILT SPAS